

ADELAIDE PLANNER'S GUIDE 2019/20


Adelaide
Convention Bureau

 **ADELAIDE**
SOUTH AUSTRALIA

adelaideconvention.com.au



CONTENTS

ADELAIDE SOUTH AUSTRALIA

3

Your Official Invitations	4
5 Reasons to Choose Adelaide	5

ADELAIDE'S RIVERBANK

6

Riverside Events & Entertainment	7
Adelaide's BioMed City	9

LIVE LIKE A LOCAL

12

Bars & Restaurants	13
Laneways	14
Destination South Australia	15

DELEGATE EXPERIENCES

16

Getting Here & Getting Around	17
Conference Experience	18
Touring Experience	19

EVENT SUPPORT SERVICES

20

Adelaide Convention Bureau's Free Services	21
Experience with Major Conventions	22
38th Australian Dental Congress	23
Conventions Adelaide Program	24
Incentives Adelaide	25
Top Ten Incentive Ideas	26

DIRECTORY

29

CBD Venues & Accommodation	30
CBD Venues with Accommodation	38
Regional Venues & Accommodation	48
Bars & Dining Experiences	55
Event Services & Delegate Experiences	60
Strategic Partners	66
Make an Enquiry	67

ADELAIDE, SOUTH AUSTRALIA


Adelaide, South Australia is an inspiring and innovative destination which is set to surprise, impress and delight with its connected precincts, celebrated food and wine and pristine natural wonders.

YOUR OFFICIAL INVITATIONS

A portrait of Hon. David Ridgway MLC, a man with glasses wearing a dark suit, white shirt, and a red patterned tie. He is positioned against a background that is a gradient from orange to red.

“Adelaide, the capital city of South Australia is a vibrant city, globally renowned for its innovation, world class facilities and ease of getting around.”

— Hon. David Ridgway MLC
Minister for Trade, Tourism and Investment

A portrait of Sandy Verschoor, a woman with short grey hair, smiling. She is wearing a patterned top and a necklace. The background is a gradient from orange to red.

“Adelaide is a city designed with people in mind, a city designed for life and we look forward to welcoming you...”

— Sandy Verschoor
Lord Mayor, City of Adelaide

5 REASONS TO CHOOSE ADELAIDE

Prepare yourself to be surprised by a vibrant, clean and safe Adelaide, South Australia, with its recent unprecedented level of infrastructure and development.



1. CONNECTED & CONVENIENT

Adelaide is Australia's best connected business, events and entertainment precinct. World-leading venues, hotels, dining and leisure is all just a short walk between each other.



2. ACCESS & VALUE

Adelaide is easy to get around, and offers superb value. Ranking as the most affordable capital city in Australia, it's arguably also the most walkable: getting around is a breeze.



3. INDUSTRY & INNOVATION

We're global leaders of industry and innovation across a number of key specialty sectors including, health, life sciences, energy, space, defence, minerals and more.



4. EXPERIENCES & LEISURE

South Australia is spoiled for choice with its premium food and wine offerings and experiences. Delegates can enjoy an authentic Australian experience. There is so much to choose from and it's all so close.



5. CUSTOMISED & COMPLETE

'Team Adelaide' will support you as one, offering a complete and unified solution to event organisers and delegates, with each element presented collaboratively and customised to what you need.

BE IMPRESSED

ADELAIDE'S RIVERBANK

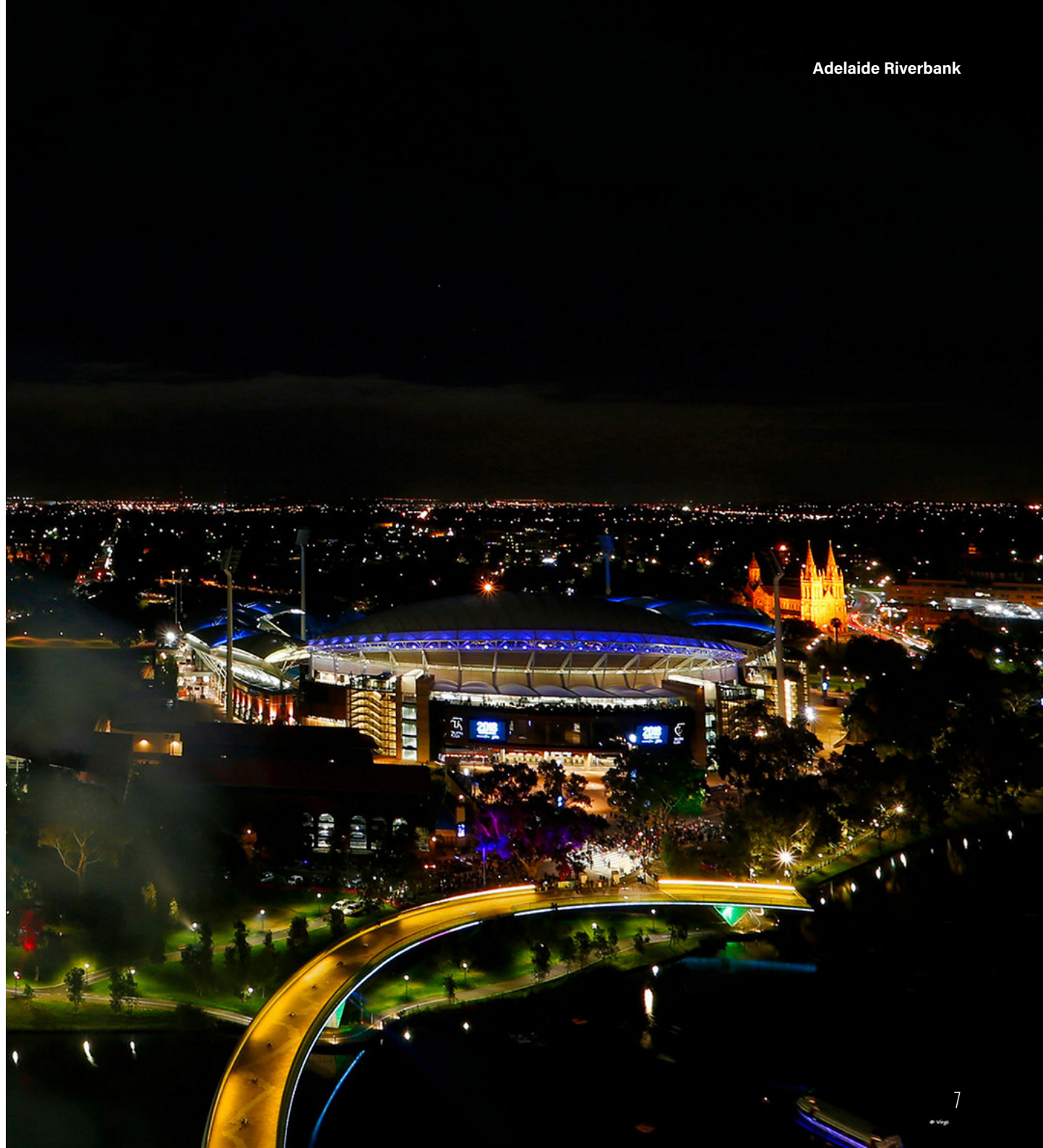
Australia's best connected business,
events & entertainment precinct

The Adelaide Riverbank is one of Adelaide's iconic public spaces, offering panoramic views across the River Torrens and surrounding parklands.

This area is developing as a world-class business, events and entertainment precinct creating a lively and highly connected riverside space for delegates to meet and do business by day and be entertained by night.

RIVERSIDE EVENTS & ENTERTAINMENT

Adelaide's riverbanks are bordered by it's major infrastructure which ideally places it to host world-class and unique events.





ADELAIDE CONVENTION CENTRE

The Adelaide Convention Centre is 'A Centre Transformed' and enjoys a reputation as one of the world's most modern, versatile and technologically advanced meetings and event spaces.

Set in the heart of Adelaide's Riverbank Precinct, the Adelaide Convention Centre is the focal point for business events in the South Australian capital.

The venue's central positioning provides fantastic panoramic views of the Riverbank Precinct to deliver guests a heightened sense of destination.

Innovation has been the core of the Adelaide Convention Centre experience from the very beginning. Its latest innovation comes in the form of its all-new Honest Goodness menu. Developed in collaboration with South Australia's BioMed City partners the menu has transformed the convention centre culinary experience.



ADELAIDE FESTIVAL CENTRE & PLAZA

Adelaide's iconic Festival Centre has undergone a \$90m redevelopment, with improvements to the building's exterior and an internal technical upgrade.

The redevelopment has enabled the Adelaide Festival Centre to continue to attract the biggest and best shows and events to Adelaide. The redevelopment better supports presenters and rewards patrons with the best arts and entertainment attractions within Adelaide's Riverbank.

A further significant commitment relates to the exciting redevelopment of the Festival Plaza. The Festival Centre sits at the heart of the Plaza and will be a key part of this transformative project that will enhance the arts and entertainment attractions in the Riverbank precinct.



ADELAIDE CASINO

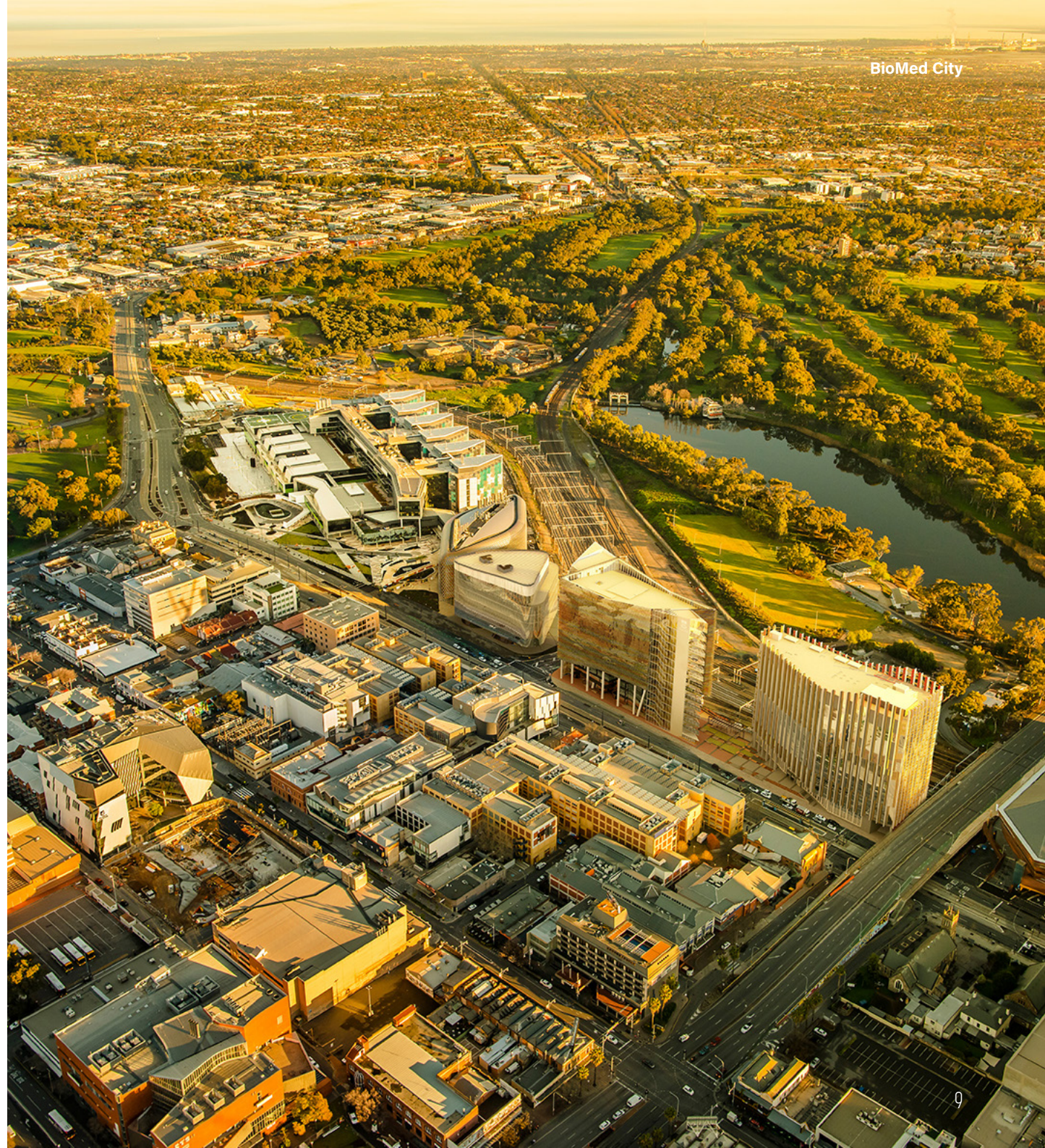
The Adelaide Casino is currently being transformed into a world-class integrated entertainment destination with a \$330m redevelopment.

The Adelaide Casino already boasts two of the cities favoured restaurants, Madame Hanoi and Sean's Kitchen, along with Station Lane and a new sports bar. The new development is underway and is due for completion in late 2020.

ADELAIDE'S BIOMED CITY

At the Eastern End of Adelaide's Riverbank the BioMed City is the largest cluster of health and biomedical research institutions in the Southern Hemisphere.

This significant development has created fertile ground for successful international and domestic conventions in the fields of health, medicine and related sciences.





SAHMRI

The South Australian Health & Medical Research Institute (SAHMRI) has significantly increased Australia's capacity for leading scientific research.

Within SAHMRI is a team of 600 researchers, who work together in search of better treatments and cures for some of the world's most challenging diseases. Creating a state-of-the-art output of medical research and clinical application with advanced laboratories and equipment in a purpose built iconic facility.



NEW ROYAL ADELAIDE HOSPITAL

The RAH is South Australia's new patient-centred model of care by delivering safe, quality health services to South Australia.

It leads the world through innovative delivery methods like the automated robots for patient meals and 'hyperloop' like piping that can deliver medicines and messages in fractions of seconds.

Co-located with SAHMRI, the RAH is a major teaching hospital and maintains strong ties with other training and research institutions.



UNIVERSITY OF SOUTH AUSTRALIA CANCER RESEARCH INSTITUTE

University of South Australia's Cancer Research Institute (UNISACRI) houses the Centre for Cancer Biology, an alliance between the university and SA Pathology, developing links between the UniSA community and up to 250 of Australia's top researchers who are working to develop a more in-depth understanding of cancer and health issues.

The Centre has a specific focus on fundamental research that is relevant to many types of cancer, as well as the research of blood-related cancers, such as leukemia and lymphoma.

With the BioMed City positioned conveniently next door to the Convention Centre, having these clinicians, researchers and physicians in weight of numbers for delegates and key note speakers.



THE UNIVERSITY OF ADELAIDE HEALTH & MEDICAL SCIENCES BUILDING

The largest building project in the University of Adelaide's history that is transforming health treatment, training and discovery.

The new Adelaide Health and Medical Sciences Building is home to 1,600 medical, nursing and dental students. It is an epicentre of clinical teaching in Adelaide, addressing some of the world's greatest challenges.

The building houses 400 research staff, across four levels of integrated laboratories, where they undertake ground-breaking research to address problems such as cancer, the symptoms of chronic diseases and ageing, and improving reproduction and children's health. This building is at the eastern end of the Biomed City and is located right next door to Adelaide's Convention Centre.



BE DELIGHTED

LIVE LIKE A LOCAL

Adelaide's vibrancy has been dialed up in recent years; and thanks to the city's easy access, visiting delegates can experience it as though they are living like a local.

BARS & RESTAURANTS

Adelaide's premium cuisine and drinks offering has extended itself in every laneway, cafe, bar and restaurant. Be spoiled for choice with these hidden gems.

National Wine Centre



Adelaide Laneways



Adelaide's Cafe's



Peel St Credit: Meaghan Coles



LANEWAYS

Adelaide's laneway scene has emerged suddenly and spectacularly to become a vital part of city life. Sprawled into hidden alleys throughout the city. Discover this vibrant side to Adelaide.



LEIGH STREET

It reigns supreme as one of Adelaide's best laneways. As one of the original laneways before they were popular, this gorgeous street is a must visit.



PEEL STREET

Blink and another bar will pop up! This ever evolving street takes on a life of its own as the sun sets. These unique venues are some of Adelaide's best restaurants, ensuring this street is always full of life.



EBENEZER PLACE

Just a few steps away from Vardon Ave, you can easily spend a whole day bar and cafe' hopping.



DESTINATION SOUTH AUSTRALIA SHOWCASE EVENT

Get a closer look at the experiences, products & services South Australia has to offer.

An exciting annual business event tailored to organisers of corporate events, conferences and conventions from across Australia and the Asia Pacific.

- A fully hosted experience including flights, accommodation and ground arrangements for the duration of the event.
- Pre-scheduled, targeted one-on-one appointments allowing guests to negotiate directly with suppliers relevant to them.
- Guests have the opportunity to discover new and innovative venues, products and services.
- Interactive and appealing social events.
- Through a familiarisation program guests are also introduced to the very best and most enjoyable experiences South Australia has to offer.
- The event facilitates new networking opportunities amongst guests sharing similar roles and objectives.

INTERESTED?

If you plan conferences, events or incentives with the potential to come to Adelaide, South Australia or if you're seeking solutions for events already confirmed in our vibrant city, contact the Adelaide Convention Bureau for more information and to book your place.



[Destination SA Showcase
Event Overview](#)



[**enquiries@adelaideconvention.com.au**](mailto:enquiries@adelaideconvention.com.au)

DELEGATE EXPERIENCES

A delegate in Adelaide will experience the efficiencies of the city's accessibility, ease and value.

GETTING HERE & GETTING AROUND

Adelaide is one of Australia's most accessible cities, on the doorstep of South Australia's unique cultural experiences.



REGULAR DIRECT FLIGHTS

Adelaide has the fastest airport-city transfer in Australia – only 10 minutes! Adelaide's multi award winning international airport welcomes a high frequency of direct international flights with over 319 international cities only one stop away from Adelaide.



GREAT VALUE

Adelaide has the most affordable accommodation in Australia (ABS) and offers quality visitor experiences at highly competitive prices.

Saving on your typical expenses means you can deliver an event beyond expectations.



TRANSPORT

Adelaide is a walkable city. Over 3,500 hotel rooms are within a 5 minute walk of the Convention Centre. With just a 20 minute stroll along North Terrace you will view: the BioMed City, Convention Centre, Festival Plaza, Cultural Blvd and the Adelaide Botanic Gardens. It's all so close!

For those that want an easier ride, Adelaide has a free tram within the CBD to connect you to so much more.



STAY CONNECTED

Delegates can stay connected during their time in Adelaide, with free Wi-Fi internet for the duration of their event at key locations including: Adelaide Airport, Adelaide Convention Centre and throughout the city centre.

"Australia's most liveable city."

— **The Australian Property Council**

"One of the world's top ten regions to visit."

— **Lonely Planet**

"World's Most Liveable Cities."

— **The Economist**

CONFERENCE EXPERIENCE

From days spent in world leading conference venues to nights enjoying some of the best food & wine in Australia, Adelaide offers a complete & exciting experience for all visitors.

MAJOR EVENT VENUES IN THE HEART OF ADELAIDE

There are a range of major event venues located in Adelaide's city and surrounds, including the globally awarded and conveniently located Adelaide Convention Centre, just a short walk from key hotels and CBD attractions.

HOTELS IN ADELAIDE

Before the end of 2021 Adelaide will see another 1,500 rooms be available as projects like the Sofitel, Crowne Plaza, QT and Adelaide Oval's hotels are built to completion.

DINING OUT, SMALL BARS & MORE!

Delegates heading out in Adelaide will benefit from a plethora of new restaurants, small bars and laneway establishments. Famous for its food and wine, Adelaide boasts more restaurants per capita than any other city in Australia. As a host of the annual Tasting Australia festival, Adelaide's award winning restaurants represent a wide range of culinary flavours and fresh produce to rival anywhere in the world. The great news is that such venues are all in close walking distance from one another and invariably adapt their programs to align with Adelaide's year round program of festivals and events.

MEMORABLE SOCIAL EXPERIENCES

Attend memorable social events at a range of venues to suit any theme, in Adelaide or close by in one of South Australia's amazing regions. The choices are endless!



ADELAIDE TOWN HALL

Steeped in tradition and ornate glamour, a perfect backdrop for any event.



STATE LIBRARY

The Mortlock Chamber in the State Library of South Australia is filled with first editions and history.



D'ARENBERG CUBE

South Australia's newest icon located in the heart of the McLaren Vale wine region, offers amazing new and unique experiences.



PENFOLDS MAGILL ESTATE

Enjoy dinner at Penfolds, home of Grange.

TOURING EXPERIENCE

Your delegates will want to linger longer in South Australia once they find out all there is to see and do.

CITY TOURIST ATTRACTIONS

All in close proximity in one of the world's most walkable cities!

- Adelaide Central Markets
- Adelaide Zoo
- South Australian Museum
- State Library of South Australia
- Adelaide Festival Centre
- Art Gallery of South Australia

RESTAURANT AUSTRALIA

Restaurant Australia is a campaign by Tourism Australia. Research shows Australia's abundance of great produce, creative high-quality cuisine and outstanding wine all resonate with prospective delegates and visitors from across the world.

Unique food and wine experiences are available across Adelaide and South Australia, and often represent the lasting memories of a delegate's experience.

BEYOND THE CITY

Beyond Adelaide, delegates may choose to explore:

Iconic Wine Regions

Over 200 cellar doors within 1 hour drive of the city, including the Barossa Valley, McLaren Vale and the Adelaide Hills.

Kangaroo Island

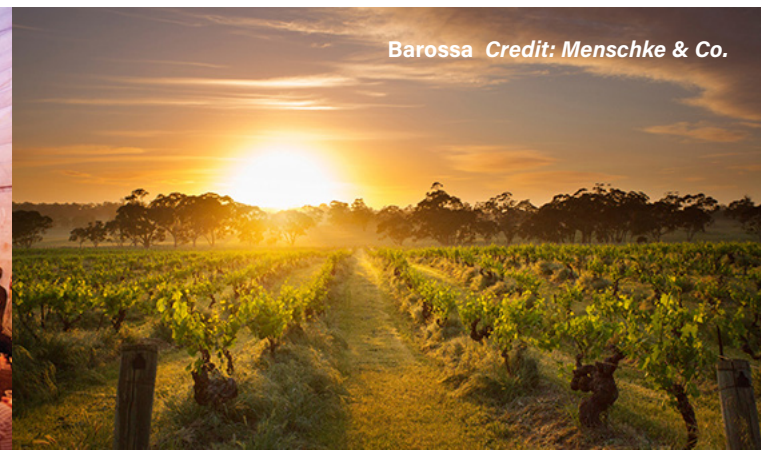
Take a ferry from Cape Jervis on Adelaide's Fleurieu Peninsula and experience the unspoilt wilderness that Kangaroo Island has to offer.

Flinders Ranges

Experience Australia's outback, with breathtaking views, natural wilderness and memorable experiences for all.

A DOOR TO THE REST OF AUSTRALIA

Across Australia, touring options are endless. Delegates may wish to swim amongst the coral on the Great Barrier Reef, or get up close and personal with wildlife in the Northern Territory's majestic Red Centre or Kakadu National Park. The sights and sounds of Sydney and Melbourne are also just a short transfer from Adelaide.



EVENT SUPPORT SERVICES

The Adelaide Convention Bureau is the peak body for business events in South Australia and represents over 200 business and service providers that share a common interest in conventions, exhibitions, incentive tourism and much more.

ADELAIDE CONVENTION BUREAU'S FREE SERVICES

WE'RE HERE TO MAKE YOUR EVENT A SUCCESS.

The Adelaide Convention Bureau's role is to provide assistance and guidance to convention and event organisers through every stage of planning, free of charge.

It's easy to take advantage of the Adelaide Convention Bureau's depth of local knowledge and breadth of experience. Organisers can make the most of state-of-the-art facilities, superior technology, food, wine and diverse cultural and recreational activities.

The Adelaide Convention Bureau can also show organisers how to make their conference budget go further, putting them in touch with suitable venues, hotels, caterers, tour operators and all the other 'behind the scenes' people required. The Bureau can suggest local support and opportunities to keep costs to a minimum. If clients confirm their business event to Adelaide, the Bureau will do its utmost to make it a success.



SOME OF OUR COMPLIMENTARY SUPPORT INCLUDES...

- Event bid preparation and presentation, including the engagement of government, industry and specialists in the respective field.
- Sourcing of suitable venues, accommodation and operators.
- Hosting and co-ordination of any site inspections.
- Advice on marketing and sponsorship.
- Support from the Bureau's PR channels and social media platform.
- Delegate boosting support.
- Advice on event budgets.
- Solutions for pre/post touring and incentive groups.
- Provision of promotional material, including guides, maps and electronic images.
- A primary avenue for information and services pertinent to event organisers is the Adelaide Convention Bureau website www.adelaideconvention.com.au
- Delegate pre/post event touring portal.
- Bureau's social media platform.
- Industry news, statistics and media.
- Interactive media gallery, where images and videos can be requested to support you marketing your event.

For more information
or to discuss your
upcoming event,
contact us today.



+61 8237 0100



enquiries@adelaideconvention.com.au



adelaideconvention.com.au

EXPERIENCE WITH MAJOR CONVENTIONS

Adelaide, South Australia has proven experience
with major international conventions.

INTERNATIONAL CONVENTIONS SECURED BY THE CONVENTIONS ADELAIDE PROGRAM

- World Congress on Medical Physics and Biomedical Engineering 2024
- World Congress of Echocardiography & Allied Techniques 2022
- World Indigenous Peoples Conference on Education 2020
- World Conference on Injury Prevention and Safety Promotion 2020
- International Congress on Child Abuse and Neglect 2020
- 68th International Astronautical Congress 2017
- 38th Australian Dental Congress 2019
- World Routes 2019
- Cardiac Society of Australia & New Zealand (CSANZ) and Australia & New Zealand Endovascular Therapies (ANZET) Annual Scientific Meeting (ASM) 2019

“ The Adelaide Convention Centre (ACC) has demonstrated to be an outstanding venue, having logistics perfectly sorted. They put their clients' need at the uttermost importance. The city of Adelaide itself is a perfect location for congresses with easily reachable locations, beautiful sceneries, friendly people and fantastic food. This year's IAC has been a tremendous success having reached 5,000 attendees and the ACC has proven perfectly capable of facing all sorts of requests from the IAF Community.”

— **Jean-Yves Le Gall**
President, International Astronautical Federation (Iaf)

“ What a fantastic city! The facilities are top notch, you'll find some of the best food and beverage in the country, and there are plenty of unique options for social event programs. Whether planning a national meeting or International conference, Adelaide is an exceptional destination.”

— **Chelsea Prangnell**
Senior Association Manager, International Conference Services Ltd

CASE STUDY

38TH AUSTRALIAN DENTAL CONGRESS

DATE

May 1, 2019

VENUE

Adelaide Convention Centre

HOST ORGANISATION

Australian Dental Association



4,345 DELEGATES



**12,000SQM
EXHIBITION SPACE**



15,057 BED NIGHTS



“As a business event destination I think there seems to be a collective desire to actually create a memorable experience for people who come to Adelaide.”

— **Oscar van Elten,**
*General Manager, Events and Sales,
Australian Dental Association*

Forward thinking Associations are now including Adelaide within their rotation and in 2019 the Australian Dental Congress took the leap of faith.

Adding another capital city into a national rotation increases membership reach, provides a new and fresh destination and broadens the horizons of Associations.

In 2019 the Australian Dental Congress held it's 38th Congress in Adelaide. Event organisers were impressed with the cities ability to collaboratively work together to ensure the event was a success.

Impressively, delegate numbers exceeded their expectations for Adelaide; proving that delegates will follow a well credentialed conference.



CONVENTIONS ADELAIDE PROGRAM

CREATING FERTILE GROUND FOR HOSTING CONVENTIONS

South Australian industry is diverse, innovative and powerful, creating fertile ground for hosting conventions.

A highly strategic initiative, the Conventions Adelaide program offers the support, networks and world leading expertise necessary to ensure convention bids and programs are successful.

Conventions Adelaide has formally engaged support from a network of over 75 'Ambassadors' who are all leaders in their respective areas of speciality and industry sectors. This group includes Ministers, the Lord Mayor, the Governor of South Australia, state government executives, university executives and professors, heads of research institutions and senior corporate executives.

Working with the Adelaide Convention Bureau and industry partners, the Ambassadors advise and open doors within their networks, establishing the support base necessary for successful conference bids and programs.

Importantly, such engagement supports a convention's goal of creating long lasting social and political legacies.

The Conventions Adelaide program may also draw on the input of the 'Professional Conference Organiser' (PCO) sector. Through their commitment to the development of South Australia's convention sector, these PCO's may advise and assist clients during the bidding process and once an event is confirmed for the destination, provide scope for retention of management support, ground services and sponsorship generation.

The South Australian Government recognises the great importance of welcoming major conventions to Adelaide and is committed to supporting the Adelaide Convention Bureau in enhancing Adelaide's international profile in the business, professional and scientific world.

South Australia is moving toward a future of sustained economic prosperity, with megaprojects in health, mining, infrastructure development and defence, advancing South Australia's economy and international profile.

SOUTH AUSTRALIA'S PRIMARY FOCUS INDUSTRIES

- Health and Medical Research
- Bioscience
- Advanced Manufacturing
- Agriculture
- Clean Technologies and Water Expertise
- Defence
- Aerospace and Aviation
- Education
- Resources – Oil and Gas – Mining – Sustainable Energy
- Food, Wine and Tourism
- Sustainability

INCENTIVES ADELAIDE

CREATING REWARDING & MEMORABLE EXPERIENCES

Adelaide is an undiscovered incentive destination providing a break from the norm for incentive organisers.

High performing incentive groups selecting the destination will enjoy enriching and genuinely 'Australian' experiences, tailored to your client's needs.

Specialising in unique offerings that the destination and suppliers can create specifically for your clients, the Incentive Adelaide program offers something new for the client who has done it all. Customised itineraries are characterised by South Australia's own unique blend of excitement, nature, culture and cuisine.

The Adelaide Convention Bureau will draw on impartial local knowledge and a network of innovative and experienced operators to help ensure all guests enjoy a truly memorable Incentives Adelaide experience, including:

- Marketing support, such as tailored imagery, video footage and brochures
- Assistance understanding travel and visas
- The latest in unique products for your clients
- VIP access and exclusive functions, such as cocktail receptions hosted by a city leader
- Support from a range of incentives Adelaide operators and partners.

For more information & resources visit:
adelaideconvention.com.au

INCENTIVES ADELAIDE RESOURCES

- Program brochures
- Sample itineraries
- Information on themed gala events
- Hotel/lodge accommodation
- Details on operators
- Case studies
- Media galleries

TOP TEN INCENTIVES

Adelaide's undiscovered incentive products are waiting. Below are the top ten reasons why your clients need to know about Adelaide as an incentive destination.



1

South Australia is home to the world's best wine with experiences to match.



2

The Australian outback experience begins in Adelaide.



3

South Australia offers incentive experiences rarely available anywhere else in the world!



4

Port Lincoln is Australia's seafood capital.



5

Asia Pacific's most unspoilt wilderness is kangaroo island, just a stone's throw from Adelaide.



6

South Australia offers versatile and inspiring event spaces for your next gala event.



7

With our premium produce Adelaide is a foodie's paradise.



8

Unique experiences only a short distance away.



9

Adelaide's beachside city is home to thousands of kilometers of pristine beaches.



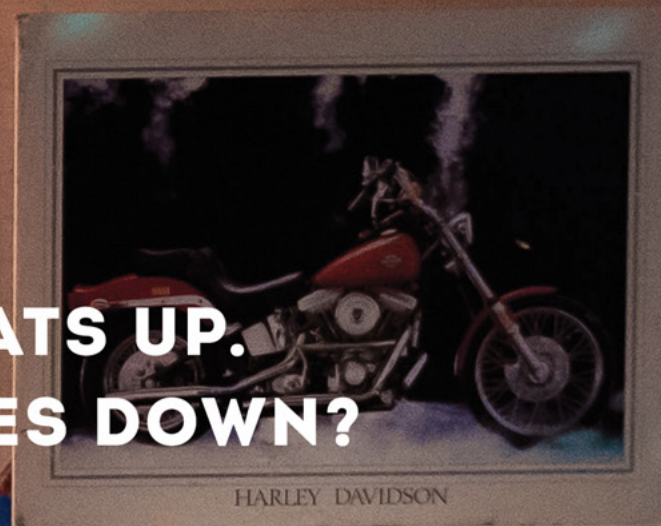
10

Tailored experiences for your clients.

SUNNY'S PIZZA, ADELAIDE

SUNNY'S

**A CITY THAT HEATS UP.
WHEN THE SUN GOES DOWN?**



SOUTHAUSTRALIA.COM | REWARDS WONDER

A woman with short brown hair, seen from the back, is sitting at a wooden bar. On the bar is a glass of white wine, a menu, and a black handbag. Behind her is a large, vibrant mural of a woman's face with yellow eyes and red lips, surrounded by colorful birds and flowers. A warm, glowing light fixture hangs near the mural. To the right, a bar counter is stocked with various bottles, including Aperol, and a bowl of ice. A red semi-transparent banner is overlaid on the right side of the image.

Where day flows into night.

Adelaide. Designed for Life.



CITY OF
ADELAIDE

Visit cityofadelaide.com.au/explore
for your ultimate city guide



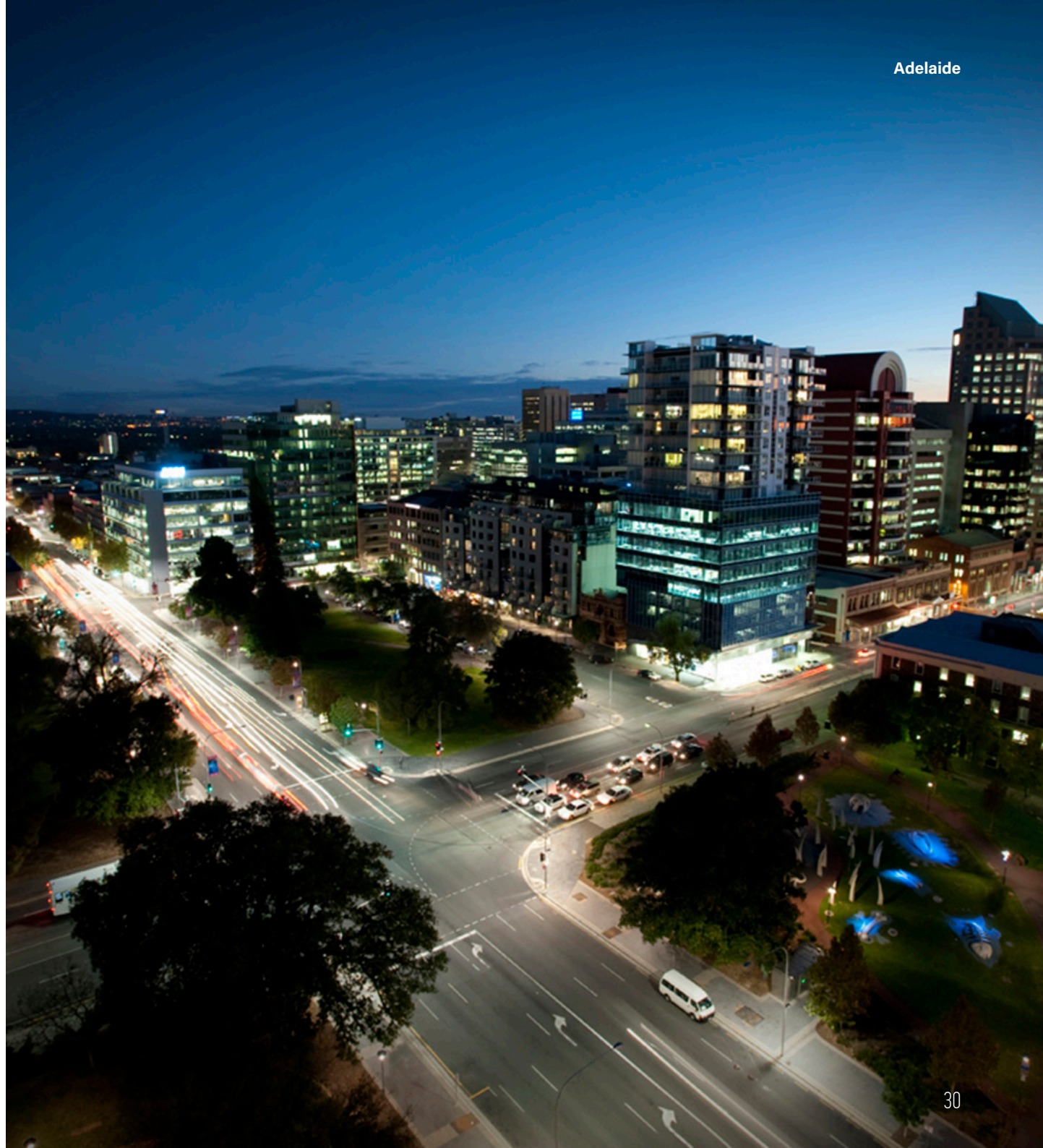
DIRECTORY

VENUES, SERVICES & ACCOMMODATION

South Australia boasts professional and experienced business event suppliers who are committed to making your event a success.

CBD VENUES & ACCOMMODATION

Nestled within a park Adelaide's one square mile city ensures that hotels and venues are all closely located.



CBD MAP

CBD VENUES, LOCATIONS & ACCOMMODATION

CBD VENUES

1. Adelaide Convention Centre
2. Adelaide Entertainment Centre 4km from Adelaide CBD
3. Adelaide Festival Centre
4. Adelaide Oval Functions & Events
5. Ayers House
6. National Wine Centre of Australia
7. Sanctuary Adelaide Zoo Functions & Events Centre

CBD ACCOMMODATION

1. Adelaide Casino
2. Avani Adelaide Residences
3. Hilton Adelaide
4. Holiday Inn Express
5. Hotel Grand Chancellor
6. InterContinental Adelaide
7. Mayfair Hotel
8. Mercure Grosvenor Hotel
9. Oaks Embassy
10. Oaks Horizons
11. Oaks Plaza Pier 10.6km from Adelaide CBD
12. Pullman Adelaide
13. Stamford Grand
14. Stamford Plaza 11.1km from Adelaide CBD
15. The Playford
16. U City

CBD LOCATIONS

1. Adelaide Central Markets
2. Art Gallery of South Australia
3. Botanic Gardens
4. Royal Adelaide Hospital
5. Rundle Mall
6. South Australian Museum
7. State Library of South Australia



CBD VENUES

NAME	PAGE	MAP #	SIZE M²*	NUMBER OF MEETING ROOMS	CLASSROOM STYLE*	THEATRE STYLE*	BANQUET*	COCKTAIL RECEPTION*
Adelaide Convention Centre	33	1	20,000	27	1860	3000	3060	6000
Adelaide Entertainment Centre	35	2	2730	8	-	8000	1000	2000
Adelaide Festival Centre	35	3	533	6	100	600	350	700
Adelaide Oval Functions & Events	34	4	800	25	680	1400	850	1500
Ayers House Conference & Events	37	5	450	6	100	200	210	300
National Wine Centre of Australia	36	6	480	7	100	400	350	500
Sanctuary Adelaide Zoo Function & Event Centre	36	7	550	3	200	280	300	510

*Capacities for largest room at venue



ADELAIDE CONVENTION CENTRE

Set at the heart of Adelaide's medical, entertainment and cultural precincts and easily accessible to the city's airport and hotels, the Adelaide Convention Centre (ACC) is one of the world's most modern, flexible and technologically advanced facilities.

Following a \$397M redevelopment which significantly increased the venue's capacity and international capability, the ACC now boasts three distinct yet seamlessly integrated buildings—East, Central and West—spanning 20,000sqm of multi-purpose event space. Its highly flexible design enables it to accommodate a broad range of business events, from meetings of 30 through to conferences of thousands.

The ACC's East Building is the pinnacle of innovation and flexibility. Home to the venue's main Plenary Hall, it features tiered seating for more than 3,000 people or 3,000sqm flat floor space.

In addition to its state-of-the-art facilities, the ACC is known for its creative approach to dining, illustrated in its innovative Honest Goodness menu. Developed in collaboration with leading nutritional experts from the South Australian Health & Medical Research Institute; University of Adelaide; and CSIRO, the menu has transformed the convention centre culinary experience with its emphasis on minimal intervention foods and conscious reduction of

processed elements. In April 2019 on the back of launching Honest Goodness, the ACC was judged 'Australia's Best' for banqueting and catering at the Meetings & Events Australia (MEA) National Awards.

Key features:

- 20,000sqm conference, exhibition and banquet space with multi-functional halls that can be subdivided into multiple configurations
- Three separate buildings, seamlessly integrated and each with its own dedicated entrance
- State-of-the-art Plenary Hall capable of being arranged into 15+ configurations
- 27 meeting rooms, easy to combine and group in clusters for smaller events
- Expansive foyer spaces providing natural light and outdoor views
- Three different types of seating including hinged, retractable and rotating seats for swift turnarounds
- Latest event technologies across audio-visual, lighting and rigging
- Variety of outdoor activation spaces

BUILDING	HALLS	AREA	HEIGHT	RECEPTION	THEATRE	CLASSROOM	BANQUET	WORKSHOP 8pax
East	Hall ABCD Plenary	2544m ²	14.7m	-	3050	-	-	-
	Hall CDE	2040m ²	14.7m	1835	2284	1086	900	1136
Central	Halls FGH	5628m ²	10.4m	5065	5388	-	3060	2688
	Halls JK	1800m ²	12.4m	1620	1444	765	780	672
West	Halls LMN	2655m ²	9.5m	2480	2550	1320	1340	976
	Panorama Ballroom	1115m ²	4.8m	1000	928	483	550	480

The Adelaide Convention Centre also has 27 meeting rooms available in various combinations of space with a theatre capacity of 50 to 400 people.

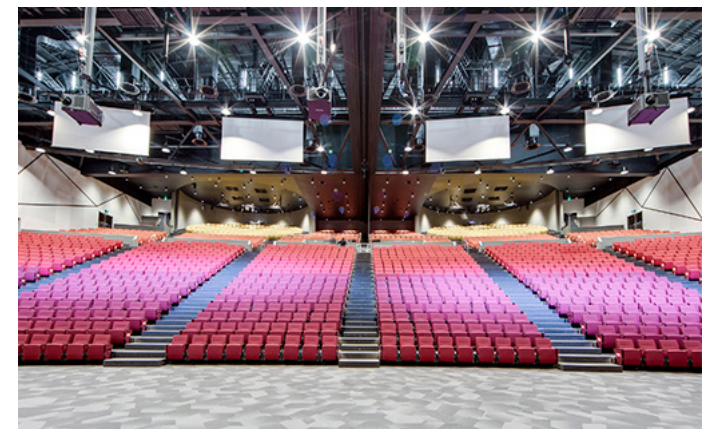
North Terrace,
Adelaide, SA, 5000



P. +61 8 8210 6677
E. sales@avmc.com.au

adelaidecc.com.au

ADELAIDE CONVENTION CENTRE



ADELAIDE OVAL FUNCTIONS & EVENTS

Situated in the heart of the city, Adelaide Oval is a world-class venue boasting the most up-to-date facilities in the market. Catering for two to 3,000 people, Adelaide Oval is a picturesque setting to entertain, celebrate and network with stunning panoramic views.

The venue offers 25 versatile event spaces, with three of South Australia's largest function spaces; the William Magarey Room (1500 pax) and the Ian McLachlan Room (700pax), along with Adelaide's largest private rooftop bar, the Lindsay Head Terrace (3000pax) with spectacular views of the CBD.

As well as standardised options, Adelaide Oval thinks outside the box to deliver bespoke packages that heavily deliver on the wow factor, with a range of options that can even expand far beyond the Oval's walls.

Key Features:

- Five-star food and wine experience created by award-winning chefs, focused on South Australian producers
- Live sound, vision and lighting production technologies
- Unique and bespoke experiences for guests such as a thrilling RoofClimb adventure or behind the scenes stadium tour
- Options to add 'wow' factors to your event with the use of stadium lighting and LED ribbon boards



War Memorial Drive
North Adelaide SA 5006
P. (08) 8211 1100
E. functions@adelaideoval.com.au



adelaideoval.com.au

Adelaide Oval



Adelaide Oval Hotel

King William Road
North Adelaide, SA 5006
P. (08) 8211 1100
E. hotelreservations@adelaideoval.com.au



adelaideoval.com.au



Due for completion in August 2020, Adelaide Oval Hotel is a boutique accommodation offering with 138 deluxe king and twin rooms. Rooms will boast spectacular views over the Adelaide Parklands, city skyline and St Peter's Cathedral. Guests' in-house experience will be complemented by a fine dining restaurant, cocktail lounge, casual dining and 24-hour room service.



Adelaide Oval Experiences

War Memorial Drive
North Adelaide, SA 5006
P. (08) 8211 1100
E. enquiries@adelaideoval.com.au



adelaideoval.com.au



Koffee Ink Café - serves casual breakfast, lunch, coffee and everything in between

Hill of Grace Restaurant - exceptional dining experience overlooking the Oval's hallowed turf

Malt Shovel Taphouse - craft beer bar and restaurant located in the Riverbank Precinct

(A)Lure Champagne & Seafood Bar - riverfront seafood restaurant and oyster bar

ADELAIDE ENTERTAINMENT CENTRE

Renowned as a concert stage to the world's stars, the Adelaide Entertainment Centre has also built an enviable reputation for hosting Adelaide's best functions.

Guests to the Centre are welcomed in breathtaking fashion, thanks to the venue's spectacular large dome entry. 'The Orb' comes alight in a kaleidoscope of colours at night and together with a giant 67 metre outdoor LED screen, delivers fantastic impact on arrival.

ROOM	BANQUET	COCKTAIL	CONFERENCE
Arena	1000	2000	6500
Theatre	700	1100	1900
Theatre A	360	550	600
Theatre B	250	450	550
Star Room	200	300	250
Suites	40	60	40
Lounges	50	60	50
Revelations Chapel	50	120	120

The experienced in-house chefs take great pride in creating unique, award-winning cuisine, prepared fresh on the premises.

The Centre offers more than 1,400 on-site car park spaces and is conveniently located in close proximity to the CBD. A tram station is located directly in front of the Centre on Port Road, providing free and frequent public transport to and from the City.



Port Road,
Hindmarsh, SA 5007
P. +61 8 8208 2222
F. +61 8 8208 2233
E. functions@theaec.net



theaec.net



ADELAIDE FESTIVAL CENTRE

The iconic Adelaide Festival Centre has completed a 90 million dollar redevelopment with improvements to the building's exterior and an internal technical upgrade.

The outcomes of the project have enabled the Adelaide Festival Centre to continue to attract the biggest and best shows and events to Adelaide. Providing a more holistic approach to show presenters and event organizers and rewarding them with one of the best arts

and entertainment precinct on Adelaide's riverbank.

A seasoned events team, and a spotlight on fresh local produce allows the Festival Centre to deliver world class events.

The Adelaide Festival Centre is the beating heart of festivals and allows you to walk from your conference straight into your favourite show and enjoy the best the arts has to offer.

ROOM	STAGE M²	THEATRE	BANQUET	COCKTAIL	CABARET	BOARDROOM	U-SHAPE
Banquet Room	-	500	350	700	280	-	-
John Bishop Room	-	60	40	50	40	30	30
Quartet Bar	-	60	100	100	48	30	30
The Riverdeck	-	-	-	120	-	-	-
GBE Galleries 2 & 3	-	-	-	850	-	-	-
Festival Theatre	196	1947	300*	350	-	-	-
Dunstan Playhouse	128	590	120*	250	-	-	-
Space Theatre	324	220-352	150*	430	-	-	-
Her Majesty's Theatre	Scheduled to reopen in 2020						

*On the stage area



King William Road,
Adelaide, SA 5000
P. +61 8 8216 8600
E. functions@adelaidefestivalcentre.com.au



adelaidefestivalcentre.com.au



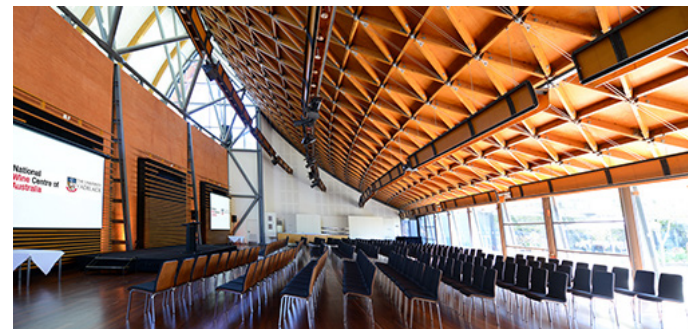
NATIONAL WINE CENTRE OF AUSTRALIA

The National Wine Centre of Australia is a conference and event facility offering 5 star services with in-house catering, audio visual facilities and event management services. The centre's unique architecture, designed to represent a wine barrel, has seen it win numerous awards for its use of natural light, earthy metal and wood textures, including the Royal Australian Institute of Architects Award. Situated alongside the stunning Adelaide Botanic Gardens, the NWC is also an Adelaide tourism icon offering Australia's largest wine

tasting experience, dining, interactive wine education, group tours and wine courses. Built in 2000 and officially opened in October 2001, the NWC's points of difference are its spectacular geographical position, clever design, pillar-less event spaces offering a flow of natural light, and exceptional multi award-winning catering service and flexibility. The centre consistently produces highly successful functions and events, which contribute to its exceptional reputation.

ROOM	DIMENSIONS LxWxH	AREA	TABLES OF 10	LONG TABLE (2.4m)	LONG TABLE (1.8m)	COCKTAIL	THEATRE	CABERET	U-SHAPE	CLASSROOM	BOARDROOM
Hickinbotham Hall	32m x 15m x 12m	480m ²	350	300	N/A	600	400	250	N/A	N/A	N/A
The Vines	21.6m x 7.5m x 2.5m	135m ²	110	80	50	100	120	80	30	30	50
The Gallery	24m x 7.6m x 3m	160m ²	120	50	50	120	140	80	30	30	50
Exhibition Hall*	17.5m x 9.8m x 4.7m	335m ²	160	140	N/A	220	220	120	N/A	100	N/A
Broughton	8.6m x 7.2m x 2.7m	63m ²	50	N/A	N/A	30	50	40	25	20	20
Ferguson	8.6m x 7.6m x 2.7m	63m ²	50	N/A	N/A	30	50	40	25	20	20
Ferguson & Broughton	14.8m x 8.6m x 2.7m	127m ²	N/A	N/A	N/A	60	80	80	N/A	40	40
Stables Lawn Area	-	-	N/A	N/A	N/A	50	N/A	N/A	N/A	N/A	N/A

*Exhibition Hall can be utilised in varying sizes. Contact us for more information.



Cnr of Botanic and
Hackney Road
P. 08 8313 3355
F. 08 8313 7444
E. nwc.info@adelaide.edu.au



wineaustralia.com.au

National Wine Centre of Australia



SANCTUARY ADELAIDE ZOO FUNCTION & EVENTS CENTRE

The Sanctuary is a beautiful Conference and Event Centre located on the first floor of the Adelaide Zoo entrance overlooking Botanic Park and adjacent River Torrens Precinct.

This city fringe venue offers flexible meeting, exhibition or banquet space with stunning views and an abundance of natural light. Our catering options highlight sustainably farmed regional SA food and wine. In addition to the Sanctuary, our food & beverage services can be enjoyed as outside catering in all the areas specified below in the

Adelaide Zoo. Managed by Blanco Horner Hospitality Management, our depth of experience is reflected in our constant return clientele and multiple state and national awards. Blanco Horner's hospitality portfolio include, Botanic Gardens Restaurant Adelaide, Cafe Alere and Function Centre Flinders University and our most awarded catering business Blanco Catering.

The Sanctuary Adelaide Zoo is your conference, events and catering solution all in one.

ROOM	AREA	DIMENSIONS	COCKTAIL	THEATRE	U-SHAPE	BOARDROOM	BANQUET
Durrell Gallery*	335m ²	45 x 9/2m	300	-	-	-	80
Attenborough Room	286m ²	27 x 9/11m	280	250	40	40	240
Goodall Room	66m ²	10 x 6.6m	60	60	27	30	40
Bamboo Forest	200m ²	10 x 20m	200	-	-	-	80
Adelaide Zoo Central Lawns	925m ²	24 x 25m	1100	1000	-	-	750
Immersion Long House	80m ²	5 x 14m	80	-	-	-	50
SANTOS Conservation Centre	100m ²	10 x 10m	80	100	40	--	-



Main Entrance Adelaide Zoo
Plane Tree Drive,
Adelaide, SA 5000
P. +61 8 8230 1313
F. +61 8 8132 0813
E. events@sanctuaryadelaidezoo.com.au



sanctuaryadelaidezoo.com.au



SANCTUARY
ADELAIDE ZOO



Ayers House - Dining Bar Events

288 North Terrace,
Adelaide, SA 5000

P. 8224 0666
E. info@ayershouse.com.au



ayershouse.com.au



This Iconic House, located in Adelaide heart, is one of South Australia's most adaptable events and restaurant spaces.

The Library, Ballroom, Conservatory, Coach House, Banksia Room, Drawing Room and Garden Marquee combine with the new Henry's Table Restaurant and to cater for between 10 and 1200 guests. Our events team and kitchen combine to create a quality SA experience to suit your wishes and desires.

CBD VENUES WITH ACCOMMODATION

NAME	PAGE	ROOMS	SIZE m ² *	NUMBER OF MEETING ROOMS	CLASSROOM STYLE*	THEATRE STYLE*	BANQUET*	COCKTAIL RECEPTION*
SkyCity Adelaide Casino	44	123	628	6	-	650	450	650
Avani Adelaide Residences	41	85	-	-	-	-	-	-
Hilton Adelaide	39	374	660	19	342	780	570	800
Holiday Inn Express Adelaide City Centre	44	245	128	4	111	91	96	125
Hotel Grand Chancellor	45	220	408	8	210	420	350	420
InterContinental Adelaide	40	367	480	9	190	450	360	500
Mayfair Hotel	45	170	124	7	60	150	100	150
Mercure Grosvenor Hotel	46	181	448	7	120	250	300	350
Oaks Embassy	41	113	57	2	8	20	-	20
Oaks Horizons**	41	97	-	-	-	-	-	-
Oaks Plaza Pier	41	196	320	4	80	160	130	300
Pullman Adelaide	46	308	357	5	160	360	240	360
Stamford Grand	42	220	683	13	250	650	520	750
Stamford Plaza	43	335	339	11	100	240	240	300
The Playford	47	182	400	7	150	500	330	600
U City	47	18	360	3	112	250	230	400

*Capacities for largest room at venue **Accommodation Only



Adelaide Zoo



SkyCity Adelaide Casino



InterContinental Adelaide

HILTON ADELAIDE

THE LIGHT AND WARMTH OF HOSPITALITY – Hilton Adelaide is Adelaide's most centrally located five star hotel, at the heart of business, leisure and dining precincts. It is the only hotel in South Australia able to host 500 delegates to meet, eat and sleep, all under one roof.

MEET – Hilton Adelaide offers more than 2000 square metres of events space, comprising of 19 meeting rooms. This includes the spectacular pillar-free Grand Ballroom, the Balcony Rooms overlooking scenic Victoria Square, as well as multi-purpose meeting rooms, a sleek boardroom and an innovative business lounge. The spacious Level 1 Gallery comfortably accommodates up to 30 exhibition booths. Wireless high-speed internet coverage throughout the hotel, best-in-class technology and world-renowned hospitality combine to make Hilton Adelaide the outstanding choice for events in South Australia.

EAT – From small intimate gatherings to large conferences of 800 people, our flexible menus cater to all tastes and event sizes. Providing an alternative and unique option for your event, the hotel also has two bars and a restaurant which exclusively showcases the best produce and wines of South Australia.

SLEEP – Designed with the discerning traveller in mind, Hilton Adelaide's great choice of 374 accommodation rooms, ranging from stylish deluxe rooms to the exclusive luxury of the executive floor, set the standard for accommodation in South Australia.

A SUSTAINABLE CHOICE – Hilton Adelaide is recognised as South Australia's leader in sustainable hospitality and the winner of prestigious environmental awards.

As part of our commitment to sustainability, we offset all carbon emissions generated by the use of the meeting space and the food and beverage consumed at your event – at no cost to you.

ROOM	AREA	THEATRE	CLASSROOM	WORKSHOP	BOARDROOM	U-SHAPE	BANQUET	DINNER DANCE	COCKTAIL RECEPTION
Grand Ballroom	660m ²	780	342	440	-	-	570	500	800
Ballroom A, B or C	220m ²	260	108	136	50	60	170	120	250
Balcony Rooms	191m ²	180	-	112	-	-	140	120	250
Balcony 1, 2, 3 or 4	45m ²	40	21	24	18	18	30	-	40
Suite 1 or 2	35m ²	25	18	-	12	12	20	-	25
Suite 3	1115m ²	80	36	-	25	30	50	-	80
Suite 4	56m ²	40	21	32	18	18	40	-	40
Meeting Room A	85m ²	40	24	32	16	18	40	-	60
Meeting Room B	130m ²	100	60	48	30	30	60	-	120
Victoria Room	252m ²	200	120	120	-	-	200	150	250
Grill 2 & 3	118m ²	60	-	-	34	-	-	34	100

233 Victoria Square,
Adelaide, SA 5000
P. +61 8 8237 2060
F. +61 8 8231 3539
E. cateringsales.adelaide@hilton.com



adelaide.hilton.com



INTERCONTINENTAL ADELAIDE

Located in the heart of the Adelaide Riverbank Precinct, adjacent to the Adelaide Convention Centre, Adelaide Festival Centre and redeveloped Adelaide Oval, InterContinental Adelaide is the preferred choice for delegates and event attendees.

Our spacious 367 guest rooms and suites are well equipped, and feature large bathrooms with exclusive views over historic and cultural Adelaide. Combined with easy access and a range of on-site dining facilities the hotel offers the perfect solution for delegates.

The world-class conference and large corporate event facilities include an on-site audio visual support team, personalized attentive service, complimentary internet access in the meeting areas, and a beautiful and stunning location, making InterContinental Adelaide stand above and beyond the competition as a venue for your next meeting in Adelaide.

Using premium South Australian produce, Executive Chef, Tony Hart has created InterContinental Adelaide's individual culinary identity and will ensure a dining experience long remembered by your guests.

NAME OF ROOM	AREA	HEIGHT (m)	LENGTH x WIDTH (m)	THEATRE	CLASSROOM	BOARDROOM	COCKTAIL	BANQUET	CABERET	U-SHAPE
Acacia Boardroom	54m ²	2.5	11.4 x 5.5	0	-	18	-	16	-	-
Banksia 1 & 2	176m ²	2.5	16.8 x 11.8	160	75	40	160	120	80	42
Banksia 1	88m ²	2.5	5.65 x 8.4	75	35	28	80	60	48	25
Banksia 2	88m ²	2.5	5.65 x 8.4	75	35	28	80	60	48	25
Blake's	110m ²	2.7/3.3	9.8 x 8.4	65	35	30	120	60	48	27
Grevillea 1 & 2	120m ²	2.5	11.7 x 10.6	100	36	28	100	80	56	33
Grevillea 1	58m ²	2.5	11.7 x 5.3	50	20	22	50	40	24	21
Grevillea 2	62m ²	2.5	11.7 x 5.3	50	20	22	50	40	24	21
Ballroom	480m ²	4.6	25 x 25	500	190	42	500	400	330	63
Ballroom 1	240m ²	4.6	25 x 12.5	200	90	28	250	160	120	33
Ballroom 2	240m ²	4.6	25 x 12.5	200	90	28	250	160	120	33

North Terrace,
Adelaide, SA, 5000
P. +61 8 8238 2400
F. +61 8 8231 1120
E. sales.adelaide@ihg.com



icadelaide.com.au



MINOR HOTELS



Oaks Embassy

96 North Terrace,
Adelaide, SA 5000

P. +61 8 8124 9900

F. +61 8 8124 9901

E. salesadmin@theoaksgroup.com.au

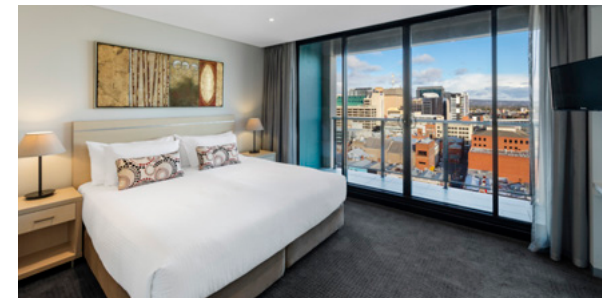


oakshotels.com

Located opposite the Adelaide Convention Centre in Adelaide's vibrant West End, Oaks Embassy is the perfect accommodation choice for your next conference offering One, Two and Three Bedroom Apartments. Our two meeting rooms are perfect for intimate gatherings or additional break-out space pre- or post-conference.

ROOM	CLASSROOM	THEATRE	BOARDROOM
Conference Room 1	8	20	12
Conference Room 2	-	-	10

MINOR HOTELS



Oaks Horizons

104 North Terrace,
Adelaide, SA 5000

P. +61 8 8210 8000

F. +61 8 8210 8001

E. salesadmin@theoaksgroup.com.au



oakshotels.com

Oaks Horizons is a stylish apartment-style hotel conveniently located on North Terrace, opposite the Adelaide Convention Centre.

The perfect base for business travellers, Oaks Horizons offers a range of spacious one and two-bedroom self-contained apartments with full kitchens, laundry facilities and private balconies with city views.

Guest facilities include an indoor heated lap pool, sauna, spa, plunge pool and fully-equipped gymnasium.

MINOR HOTELS



Oaks Plaza Pier

16 Holdfast Promenade,
Glenelg, SA 5045

P. +61 8 8350 6688

F. +61 8 8350 6699

E. salesadmin@theoaksgroup.com.au



oakshotels.com

Boasting an absolute beachfront location in Adelaide's favourite seaside suburb Glenelg, Oaks Plaza Pier is setting the standard for serviced accommodation.

Our sensational ocean views, conferencing and resort facilities make us an ideal choice for corporate travellers seeking beautifully appointed studios and self-contained one, two and three-bedroom apartments offering ocean or park views with private balconies. Guest facilities include an indoor heated pool, spa, sauna, gymnasium and restaurants.

MINOR HOTELS



Avani Adelaide Residences

176 Franklin Street,
Adelaide, SA 5000

P. +61 8 8470 7050

F. +61 8 8470 7099

E. salesadmin@theoaksgroup.com.au



avanihotels.com

Oozing with appeal, our brand new Avani Adelaide Residences provides the perfect mix of design and comfort.

Enjoy light-filled Avani Rooms or feel right at home in a one or two-bedroom suite, equipped with all of life's essentials that allow you to relax or work as you please.

Stay in and enjoy our barbecues on the roof top and movie nights at the in-house cinema.

STAMFORD GRAND ADELAIDE

With panoramic views of the ocean, city and Adelaide Hills, Stamford Grand Adelaide is one of Australia's leading resort-style hotels. Located on absolute beachfront at Glenelg, Adelaide's premium coastal and retail precinct, the hotel is only a 10 minute drive from Adelaide's International Airport and 20 minutes from Adelaide's CBD.

A purpose built Convention Hotel, Stamford Grand Adelaide, features an entire floor that is dedicated to meetings and events. The hotel offers 683 square metres of conference, meeting and exhibition facilities. The elegant Grand Ballroom features floor to ceiling French windows and balcony access with uninterrupted ocean views. This versatile space can accommodate up to 750 for a cocktail event or 500 for a banquet dinner.

The hotel also features an additional 7 meeting rooms that are ideal for concurrent sessions or smaller meetings. Other features include access to the outdoor balcony and vehicle access to the conference floor. The hotel offers an extensive menu selection, on-site event coordinators and an on-site audio visual company. For an event with a difference, a luxury marquee can be set up on the Glenelg foreshore.

The hotel's 220 spacious guest rooms and suites offer spectacular views of the ocean or Adelaide Hills and are appointed to ensure you experience the ultimate in luxury and comfort when staying at Stamford Grand Adelaide. The hotel also features two restaurants and two bars, all with stunning beachfront views plus a fully equipped gymnasium, outdoor heated pool, spa and sauna.

ROOMS	AREA	CABERET	BANQUET	COCKTAIL (NO STAGE)	THEATRE	CLASSROOM
Grand Ballroom	683m ²	380	500	750	650	250
Ballroom 1	165m ²	80	100	190	170	56
Ballroom 2	150m ²	80	100	190	170	56
Ballroom 3	134m ²	56	80	170	150	48
Ballroom 4	124m ²	48	60	140	130	40
Ballroom 5	110m ²	40	60	110	100	40
Moseley Room	120m ²	48	60	80	80	24
Hindmarsh Room	70m ²	32	30	50	48	24
Colley Room	130m ²	56	70	100	100	40
Boardroom	29m ²	-	-	-	-	-

Please note that staging is not available in the Moseley, Hindmarsh and Colley Rooms.

Moseley Square,
Glenelg, SA, 5045

P. +61 8 8376 1222

F. +61 8 8376 1111

E. sales@sga.stamford.com.au



stamford.com.au



STAMFORD PLAZA ADELAIDE

Stamford Plaza Adelaide is conveniently located in the heart of the city on Adelaide's cultural boulevard, North Terrace. Only 15 minutes from Adelaide's International Airport, the hotel is ideally located opposite Parliament House, the Adelaide Convention Centre and within walking distance to the Festival Centre, River Torrens and Adelaide's lush parklands.

Stamford Plaza Adelaide offers 11 specially designed meeting and function rooms, two of which offer natural light, catering for any occasion up to 300 people. The magnificent Crystal Room, with its own private lift access, has been adorned with ornate ceilings and Waterford crystal chandeliers, offering a spectacular space to meet or dine in.

The elegant Boulevard Room has balcony access and views of leafy North Terrace and Parliament House, whilst the spacious

Terrace Ballroom can be divided into three separate rooms. There are also dedicated cabinet boardrooms, which feature in-built AV equipment and are ideal for small group meetings. With an on-site audio visual company and in-house professional event coordinators, Stamford Plaza Adelaide will ensure that every facet of your event runs smoothly.

The hotel features 335 contemporary and spacious guestrooms, including 22 suites, with panoramic views of the city and parklands. In addition, Stamford Plaza Adelaide features four diverse food and beverage outlets including Stamford's signature Argentinean restaurant, La Boca Bar and Grill. The hotel also features a fully equipped gymnasium, rooftop swimming pool and spa facilities. Stamford Plaza Adelaide's professional and experienced team are able to assist with all conference and event accommodation requirements.

VENUE	AREA	CABERET	BANQUET (NO DANCEFLOOR/STAGE)	COCKTAIL	THEATRE (WITHOUT STAGE)	CLASSROOM	BOARDROOM
Terrace 1	116m ²	50	80	100	100	36	30
Terrace 2	115m ²	50	80	100	100	36	30
Terrace 3	108m ²	40	80	100	80	36	30
Terrace 1 & 2	231m ²	112	160	200	200	72	50
Terrace 1, 2 & 3	339m ²	160	240	300	240	100	-
Boulevard Room	206m ²	100	150	150	160	60	40
Crystal Room	189m ²	80	110	120	130	55	50
Clare Room	89m ²	30	40	50	40	30	20
Club Lounge	75m ²	25	40	30	40	25	15
Executive Lounge	160m ²	40	60	100	60	30	20
Barossa Room	89m ²	30	60	50	40	30	20
Boardroom	89m ²	-	-	-	-	-	20
Chairman's Lounge	40m ²	-	-	-	-	-	8

150 North Terrace,
Adelaide, SA, 5000

P. +61 8 8461 1111
F. +61 8 8231 7572

E. sales@spa.stamford.com.au



stamford.com.au

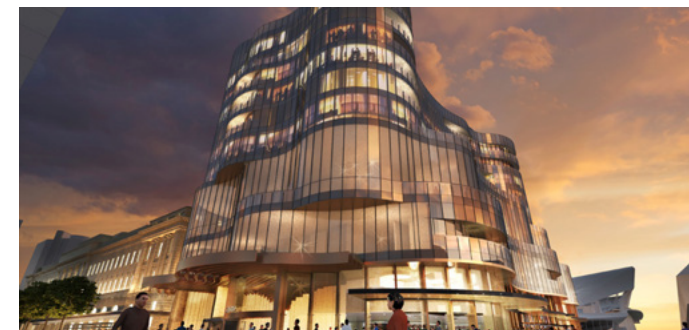


SKYCITY ADELAIDE CASINO

Located in the heart of Adelaide's Riverbank Precinct, SKYCITY Adelaide Casino is South Australia's premier entertainment destination. In 2020, SKYCITY Entertainment Group will open Adelaide's most luxurious all-suite hotel as part of a \$330 million expansion project. Featuring 120 stunning suites ranging from 50sqm – 216sqm, the expansion also features conference and function spaces ranging from intimate boardrooms up to the breathtaking Ballroom with views over the River Torrens, a luxury

spa and wellness centre and a wide range of dining options including a Rooftop Bar with the city's most captivating view. Perfectly situated in the Riverbank Precinct, SKYCITY Adelaide Casino sits alongside the Adelaide Festival Centre, Adelaide Convention Centre and iconic Adelaide Oval, forming a world-class entertainment precinct. Walking distance from key landmarks and shopping destinations, SKYCITY Adelaide Casino sits proudly in the vibrant heart of the CBD, and is at the gateway to South Australia's world-famous regions.

ROOM	SIZE	COCKTAIL	BANQUET/SIT DOWN	CABARET	THEATRE
SKYCITY Ballroom 1 & 2	628m ²	650	450	315	650
SKYCITY Ballroom 1	435m ²	400	310	210	400
SKYCITY Ballroom 2	193m ²	182	140	100	182
SKYCITY Suite	114m ²	80	60	48	80
SKYCITY Boardrooms 1 - 3	46-65m ²	30-50	12	-	-
SKYCITY Rooftop Bar	405m ²	340	-	-	-
Sean's Kitchen	386m ²	215	160	-	-



North Terrace,
Adelaide, SA 5000
P. (08) 8212 2811
E. Functions@adelaidecasino.com.au



adelaidecasino.com.au



HOLIDAY INN EXPRESS ADELAIDE CITY CENTRE

At Holiday Inn Express Adelaide City Centre we believe in simple smart travel with fast check-in, free Express Start hot buffet breakfast and free high speed Wi-Fi.

Our new 9 level, 245 room hotel is in the vibrant north west quarter of the Adelaide's CBD, close to Adelaide Oval, Adelaide Convention Centre, Adelaide Casino and Rundle Mall.

And introducing the addition of our new industrial style space the Balcony Room, bringing us up to 5 event spaces with all-inclusive audio-visual equipment we have your next event covered!

Stay smart and stay with us!

ROOM	CABARET STYLE	CLASSROOM STYLE	U-SHAPE STYLE	THEATRE WITH AISLE	BANQUET STYLE	COCKTAIL STYLE	BOARDROOM STYLE
Balcony Room	72	48	24	91	96	125	40
Balcony Room East	42	24	20	56	48	65	24
Balcony Room West	36	32	12	44	40	56	16
Meeting Room	-	-	-	-	-	-	16
The Great Room	-	-	-	-	-	150	-



30 Blyth Street,
Adelaide SA 5000
P. +61 8 8112 3000
E. res.adlah@proinvesthotels.com



hiexadelaide.com.au



AN IHG® HOTEL
ADELAIDE CITY CENTRE

HOTEL GRAND CHANCELLOR

Hotel Grand Chancellor Adelaide is located in the West End of Adelaide's CBD nestled amongst the laneways and new culture of bars, coffee shops and bistros.

Your Adelaide conference experience starts in one or more of our eight conference rooms. Small meeting or breakout spaces with flowing fresh air and natural light leading through to an elegant Ballroom featuring a 5.5 metre decorative ceiling.

Don't expect a standard coffee break and don't expect a standard bowl of mints, that's not our style. Boring conference food: not with us - timber boards laden with fresh South Australian produce welcome your guests for a seated lunch in Bistro Sixty5 or network with colleagues and exhibitors in our spacious pre-function area and outdoor balcony.

Why not include a visit to the Hotel Grand Chancellor Adelaide before signing any conference contract. We will ensure that your budget is met, without compromising on quality and service.

ROOM	AREA	THEATRE	CLASSROOM	COCKTAIL
Hindley 1	145m ²	130	70	130
Hindley 2	118m ²	110	60	120
Hindley 3	145m ²	130	70	130
Hindley Ballroom	408m ²	420	210	420
Torrens 1	48m ²	30	-	25
Torrens 1, 2 & 3	118m ²	70	-	80
Balcony	99m ²	-	-	80
West End Room 1	99m ²	60	35	50
West End Room 2	38m ²	20	-	-
Poolside	-	-	-	100
Sebastyan's Bar	-	-	-	100



65 Hindley Street,
Adelaide, SA 5000
P. +61 8 8237 3815
F. +61 8 8237 3816
E. csm@hgadelaide.com.au



grandchancellorhotels.com



MAYFAIR HOTEL

The luxurious 5-star Mayfair Hotel is situated in the heritage listed, beautifully renovated Colonial Mutual Life building. The Mayfair Hotel boasts an unmatched location - adjacent to Rundle Mall and a short walk to Adelaide's Riverbank Precinct and Convention Centre.

Currently ranked number 1 Hotel in Adelaide on TripAdvisor, the Mayfair's 170 elegant rooms and suites are complemented by light filled meeting and function rooms, a business centre and gymnasium. The Mayfair Hotel offers stylish bar and dining options, Mayflower Restaurant, HENNESSY Rooftop Bar and THE DEN.

Mayflower Restaurant is devoted to reviving classic hotel cuisine in the skilful hands of Bethany Finn, and offers buffet breakfast and a la carte dinner. The Mayfair's new Bistro, THE DEN, offers a contemporary Bistro experience, with a touch of Mayfair luxury, open 10am to 10pm daily. HENNESSY Rooftop Bar offers a premium selection of high-end champagne, wine, beer, spirits and house cocktails, with stunning city views of Adelaide. Enquiries are welcome for private events at Mayflower, THE DEN or HENNESSY.

ROOM	THEATRE	U-SHAPE	BOARDROOM	CLASSROOM	CABERET	BANQUET	COCKTAIL	SIZE
Garnet	16	14	16	-	-	-	-	28m ²
Emerald	-	-	6	-	-	-	-	14m ²
Opal *Garnet & Emerald	30	20	22	-	-	-	-	42m ²
Topaz	20	12	14	-	-	-	-	26m ²
Ruby	50	20	22	24	24	40	60	58m ²
Pearl	84	30	30	36	42	60	90	82m ²
Diamond *Pearl & Ruby	130	-	-	60	70	100	150	124m ²



45 King William Street,
Adelaide, SA 5000
P. +61 8 8210 8888
F. +61 8 8212 0333
E. stay@mayfairhotel.com.au
mayfairhotel.com.au



MERCURE GROSVENOR HOTEL ADELAIDE

Mercure Grosvenor Hotel Adelaide is conveniently located in the heart of Adelaide city, positioned opposite Adelaide Convention Centre and close to Adelaide Oval and Adelaide Festival Centre, with major shopping, entertainment and cultural districts all close by. The hotel features 181 perfectly appointed rooms for your delegates, offering a range of options including Privilege Rooms and Suites.

For product launches, gala dinners, conferences or exhibitions, Mercure Grosvenor Hotel Adelaide features seven, flexible meeting rooms located on one dedicated conference floor. For banquets up to 300 people or executive meetings for 5, Mercure Grosvenor can manage it all. With complimentary hi-speed WiFi, on-site parking, and an open plan networking space, the hotel is the right choice for every event.

ROOM	HEIGHT (m)	AREA (m ²)	BANQUET PLATED	BANQUET BUFFET	COCKTAIL	THEATRE	CABARET	BOARD	U-SHAPE	CLASSROOM
Glenroy & Grayson's	3.8	448	300	250	350	250	160	-	-	120
Glenroy	3.8	240	150	120	175	200	96	36	33	60
Grayson's	3.8	208	120	100	150	150	48	32	29	56
James Alexander	4	90	70	60	120	110	56	36	33	42
Pioneer	3	80	50	40	75	50	24	22	15	30
Colony	2.3	60	30	20	40	30	16	18	15	18
Telfer	4	23	-	-	-	-	-	10	-	-
Sharman	4	20	10	-	10	15	8	12	9	-



125 North Terrace,
Adelaide, SA 5000
P. 08 8407 8888
F. 08 8407 8877
E. meet@mercuregrosvenorhotel.com.au



mercuregrosvenorhotel.com.au

Mercure
HOTELS
**GROSVENOR
ADELAIDE**

PULLMAN ADELAIDE

Global explorers have a new Adelaide hub! Our chic, light-filled lobby will welcome you to Pullman Adelaide, Adelaide's newest 5-star hotel in the heart of the city. Our 308 rooms and suites offer a fresh, open layout and all-round connectivity; ready to welcome modern-day adventurers and nomads, travelling for business or pleasure.

Positioned in the heart of the Adelaide Central Business District and with Adelaide's world-class dining experiences and vibrant East End right on our doorstep, Pullman Adelaide is perfectly located. Many other uniquely South Australian highlights, such as the Barossa Valley, Adelaide Hills and McLaren Vale, are only a short journey away.

Conferences, meetings, weddings – we do it all. From small meetings of 10 to conferences of 380 and anything in between, Pullman Adelaide has the ideal meeting space to cater for your needs. Pullman Adelaide features unique 15th floor conference facilities located on the top level of the hotel.

Features include a large pre function foyer and balcony with opening glass doors offering an abundance of natural light and fresh air, flexible Hindmarsh Rooms, Executive Boardroom featuring breathtaking views of Adelaide, state of the art technology, innovative breaks and a dedicated event specialist.

ROOM	AREA (M ²)	THEATRE	CABARET	BANQUET	CLASSROOM	COCKTAIL	U-SHAPE	BOARDROOM
Hindmarsh Ballroom	357	360	192	240	160	360	-	-
Hindmarsh 1, 2, 3 or 4	89	90	48	60	36	90	28	28
Hindmarsh 1 & 2 or 3 & 4	178	180	96	120	80	180	50	48
Executive Boardroom	46	40	24	30	24	40	15	16



16 Hindmarsh Square,
Adelaide SA 5000
P. (08) 8206 8888
E. hb217@accor.com



pullmanadelaide.com.au

pullman
HOTELS AND RESORTS
ADELAIDE

THE PLAYFORD

The Playford Adelaide, MGallery by Sofitel is a boutique 5-star AAA accredited hotel located on the prestigious North Terrace. Offering an opulent blend of classic style and contemporary luxury, the Art Nouveau ambience flows throughout all 182 beautifully appointed guestrooms, studio spa suites and New York style loft suites. Guest facilities include a fully equipped Health Club with indoor heated

pool, spa and sauna, business centre and laundry, all of which are accessible 24 hours a day. Located 9 kilometers from Adelaide International Airport, The Playford is ideally situated with Adelaide Oval, Adelaide Convention Centre, SkyCity Adelaide Casino and the central business, shopping and restaurant districts all within walking distance.

VENUE	THEATRE	CLASSROOM	U-SHAPE	BOARDROOM	CABERET	COCKTAIL	AREA
Ballroom	500	150	-	-	200	400	400m ²
Ballroom I	180	45	36	40	80	155	160m ²
Ballroom II	70	24	20	30	40	90	80m ²
Ballroom III	150	42	36	40	72	155	160m ²
Adelaide	100	32	-	40	56	120	120m ²
Boardroom	-	-	-	12	-	-	18m ²

Meeting room ceiling height 3.6m (Boardroom 2.7m)



120 North Terrace,
Adelaide, SA 5000
P. +61 8 8213 8888
F. +61 8 8213 8822
E. sales@theplayford.net.au



theplayford.com.au



U CITY

Introducing Adelaide's newest venue in the heart of city – U City Function Centre. With a dedicated pre-function space, function room and the flexibility to divide into three separate meeting rooms for concurrent sessions, the state-of-the-art U City Function Centre is the perfect location for your next event.

Experience award-winning catering brought to you by Blanco Horner Hospitality, a local family-run business offering guests a modern Australian menu that focuses on fresh, sustainable and

ethically farmed local produce, including a wonderful selection of South Australian wines.

U City is an innovation of leading South Australian not-for-profit organisation, Uniting Communities. Host your next event or function at U City knowing that all profits will help to provide much-needed community services across the state. Book now and be one of the first to experience this modern, versatile space.

ROOM	ROOM SIZE M ²	COCKTAIL	THEATRE WALLS CLOSED	THEATRE WALLS OPEN	CLASSROOM	BANQUET ROUNDS 8 PER TABLE WALLS CLOSED	BANQUET ROUNDS 8 PER TABLE WALLS OPEN	OPEN-ENDED ROUNDS 6 PER TABLE	U-SHAPE	BOARDROOM
Function Centre	360	400	250	400	112	176	232	108	-	-
Room 1	140	120	100	-	40	80	-	60	22	20
Room 2	90	90	80	-	30	72	-	54	20	16
Room 3	130	110	100	-	40	72	-	54	22	20
Room 1 & 2	230	200	180	-	70	152	-	114	40	32
Room 2 & 3 with pre-function space	220	200	180	-	70	144	-	108	42	36



43 Franklin Street
Adelaide
P. 1800 247 365
E. functions@ucity.com.au



ucity.com.au



Function Centre

REGIONAL VENUES & ACCOMMODATION

Adelaide's regions offer unique settings with quality venues and accommodation.

The d'Arenberg Cube



FEATURED REGIONS

From the outback to the coast and everywhere in between, get closer to the real South Australia in our diverse regions.

ADELAIDE HILLS

Wind your way down leafy lanes, stopping at villages dappled in light. The Hills are so close and house amazing suppliers.



The Lane

FLEURIEU PENINSULA

This diverse region provides iconic wineries with neighbouring beaches and unique water based activities.



The d'Arenberg Cube

BAROSSA VALLEY

This world renowned region has it all, incentive products, meeting spaces and accommodation!



Jacobs Creek

REGIONAL SOUTH AUSTRALIA

There is so much to explore and it's all so close. Find the truly authentic Australian experience in Regional SA.



Flinders Ranges Credit: Ben Goode

REGIONAL MAP

REGIONAL VENUES, LOCATIONS & ACCOMMODATION

1 Adelaide Hills
31KM DRIVE



2 McLaren Vale
40KM DRIVE



3 Barossa
72KM DRIVE



4 Kangaroo Island
35MIN FLIGHT



- 1. Haus Group Hahndorf
- 2. Jacob's Creek
- 3. Lot 100
- 4. Novotel Barossa Valley Resort
- 5. Port Lincoln Hotel
- 6. Seppeltsfield
- 7. The Lane Vineyard
- 8. Wirra Wirra Vineyards



REGIONAL VENUES & ACCOMMODATION

NAME	PAGE	MAP #	ROOMS	SIZE M²*	NUMBER OF MEETING ROOMS	CLASSROOM STYLE*	THEATRE STYLE*	BANQUET*	COCKTAIL RECEPTION*
Haus Group Hahndorf	52	1	84	105	5	90	120	90	150
Jacobs Creek	53	2	3	264	5	50	70	120	1200
Lot 100	53	3	-	-	3	-	-	500	500
Novotel Barossa Valley Resort	52	4	140	252	9	130	250	180	300
Port Lincoln Hotel	54	5	111	237	7	120	200	200	315
Seppeltsfield Wines	54	6	-	500	4	180	350	400	500
The Lane Vineyard	54	7	-	250	3	70	90	80	125
Wirra Wirra Vineyards	54	8	-	20	1	20	-	50	100

*Capacities for largest room at venue



Novotel Barossa Valley Resort



Glen Ewin Estate



Wirra Wirra

HAUS GROUP HAHNDORF

Just 20 minutes from the Adelaide CBD, you'll feel as if you're a world away in the heart of the Adelaide Hills. Haus Group has state-of-the-art venue spaces including our brand new Conference & Events Centre that can cater for groups up to 150, Haus Restaurant (winner 2018 SA Venue Caterer of the Year) and three boutique accommodation options. Offering one single point-of-contact, we can meticulously plan and deliver your next conference, event or business meeting.

Take in the beauty of the Hills and rest easy, knowing that your accommodation, dining, transport, conference space and leisure activities will all be managed by our professional, experienced team.

We aim to make your stay in Hahndorf and the Hills, rich with the finest local food, wine, and of course award-winning service. We promise that you will go home well rested and fed, with a smile upon your face.

ROOM	BOARDROOM	THEATRE	U-SHAPE	CLASSROOM	CABERET (6 PER TABLE)	COCKTAIL	LONG TABLE/S
The Boardroom	16	30	N/A	24	N/A	N/A	20
The Walnut Room 1	N/A	40	N/A	12	N/A	40	30
The Walnut Room 2	24	50	20	18	30	60	48
The Walnut Rooms (1&2)	24	90	20	30	42	100	90
C3 Auditorium	N/A	200	N/A	150	108	250	N/A
Conference & Events Centre - East	30	50	24	30	24	60	40
Conference & Events Centre - West	50	80	40	70	54	90	80
Conference & Events Centre - Full Venue	N/A	130	60	100	78	150	130
Haus Restaurant	N/A	N/A	N/A	N/A	N/A	350	250



25 Main Street,
Hahndorf, SA 5245
P. 8388 7555
E. functions@thehausgroup.com.au



thehausgroup.com.au



NOVOTEL BAROSSA VALLEY RESORT

Be consumed in the Barossa — Australia's premier food and wine destination.

The Novotel Barossa Valley Resort is centrally located in the township of Rowland Flat, and is the only 4.5 STAR conference venue in the Barossa.

Up to 250 delegates can be catered for in nine flexible function rooms with dinner and conference menus designed to showcase

the freshest seasonal local produce.

All 140 accommodation rooms feature a private balcony with sweeping views across the Jacob's Creek vineyards and Barossa Ranges.

A wide range of onsite activities are available for guests including complimentary wine tasting featuring a different Barossa winery showcased daily.

ROOM	AREA	THEATRE	U-SHAPE	BOARDROOM	CLASSROOM	BANQUET	COCKTAIL
Shiraz	252m ²	250	70	60	130	180	300
Cabernet	140m ²	120	40	36	66	80	180
Semillion	43m ²	30	15	18	15	30	25
Merlot	43m ²	30	15	18	15	30	25
The Tasting Room	25m ²	20	-	18	-	20	25
Poolside	-	-	-	-	-	200	300
Tanunda Pines	-	-	-	-	-	80	180



42 Pioneer Avenue, Rowland Flat,
Barossa Valley, SA 5352
P. +61 8 8524 0045
F. +61 8 8524 0100
E. H3026-sl1@accor.com



novotelbarossa.com

NOVOTEL
HOTELS & RESORTS

BAROSSA VALLEY RESORT

LOT.100

LOT. 100 has been designed to showcase South Australia's picturesque agricultural landscape and give a home to a collective that celebrates local produce. Immerse yourself with the finest embodiment of forward-thinking local brews, spirits, wines and food.

Nestled in the Adelaide Hills, LOT. 100 is the production site and cellar door of Mismatch Brewing Co. and Adelaide Hills Distillery. This collaborative destination presents together with Hills Cider Co., Ashton Valley Fresh and Vintelooper, as well as an onsite restaurant, for an immersive and unique experience.

Perfect for events that are intimate or on a grand scale, the space and options for bespoke event experiences are endless. Tours, masterclasses and experiences in food, beverage, sustainability and more offer something for every guest.



68 Chambers Road
Hay Valley, SA 5252
P. 08 7077 2888
E. events@lot100.com.au



lot100.com.au

LOT.100
HAY VALLEY



SUSTAINABLE | NATURAL | AUTHENTIC

ROOM	BANQUET	COCKTAIL
LOT.100 Restaurant	150	250
LOT.100 Courtyard	500	500

JACOB'S CREEK



Jacob's Creek

Barossa Valley Way,
Rowland Flat, SA 5352
P. +61 8 8521 3000
E. functions@jacobs-creek.com



jacobs-creek.com

Located an hour's drive from Adelaide, we are set amongst our vineyards, overlooking the nearby Barossa Ranges. Catering for groups up to 1,000, we offer interactive wine experiences with dining options. Ideal for large groups, our Jacob's Creek Garden to Plate Cooking Challenge is led by our talented chefs, teams prepare dishes, which are judged and shared with Jacob's Creek wines.



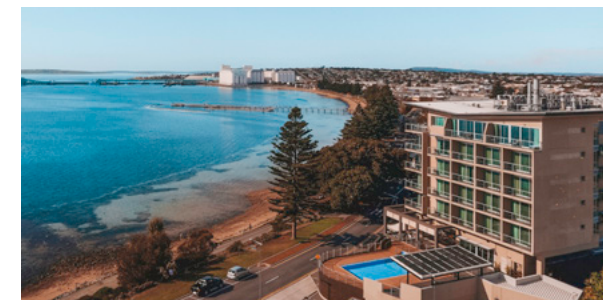
PORT LINCOLN HOTEL

Port Lincoln Hotel

1 Lincoln Highway,
Port Lincoln, SA 5606
P. +61 8 8621 2000
F. +61 8 8682 6130
E. functions@portlincolnhotel.com.au



portlincolnhotel.com.au



The Port Lincoln Hotel multi-purpose function centre overlooks the Boston Bay in the heart of Port Lincoln. The 650m² of space can be divided into seven sound-proofed rooms for events of up to 600 delegates cocktail and 200 open cabaret. Together with 111 modern hotel rooms and extensive menus showcasing the local produce – The Port Lincoln Hotel is the perfect venue for a business or leisure get-away.



SEPPELTSFIELD BAROSSA

Seppeltsfield Wines

Seppeltsfield Road,
Seppeltsfield SA 5355

P. +61 8 8568 6217

F. +61 8 8562 8333

E. functions@seppeltsfield.com.au



seppeltsfield.com.au



WINE | FOOD | CRAFT | DESIGN | BEAUTY

Seppeltsfield is based around the unique and irreplaceable fortified wine collection dating back to 1878.

Heritage-listed function rooms with seating from 12 up to 500 and spacious outdoor areas offer the perfect venue for your function or event. We are able to facilitate winery tours and tastings, artist and beauty workshops, cooking tours and tastings as well as Segway tours through our vineyard.



THE LANE VINEYARD

The Lane Vineyard

5 Ravenswood Lane
Hahndorf, SA 5245

P. +61 8 8388 1250

E. welcome@thelane.com.au



thelane.com.au



Surrounded by highly prized vineyards just 25 minutes from Adelaide, The Lane offers a host of bespoke group experiences and sophisticated private dining options, complemented with breathtaking panoramic views of the Adelaide Hills. Perfect for client entertaining or as a unique reward for employee performance or conference participation.



WIRRA WIRRA

Wirra Wirra

McMurtrie Road
McLaren Vale, SA 5171

P. 08 8323 8414

E. bookings@wirra.com.au



wirrawirra.com



Historic, iconic and left of centre, Wirra Wirra is full of stories from its 125-year history. Just 45 minutes from Adelaide in the McLaren Vale region.

Experiences are available for corporates or the public and include behind the scenes tours, private tastings, blending classes, meeting facilities and on-site catering from Harry's Deli.

Catapulting watermelons available on request.

BARS & DINING EXPERIENCES

Steeped in history and drenched in class, wash it all down in Adelaide's booming bar scene. All just a short stroll for your delegates.



BARS & DINING

NAME	PAGE
Alure	57
Bread & Bone	57
Hotel Richmond	57
Malt Shovel Taphouse	57
Melt Pizzeria	57
Nola	57
Osteria Oggi	58
Oyster Bar	58
Press Food & Wine	58
Sammys on the Marina	58
Shobosho	58
Stag Public House	59
The Cumby	59
The Gallery	59
Yiasou George	59
2KW Bar & Restaurant	59



Adelaide Laneways Credit: Adelaide Bar Boys



Adelaide Laneways Credit: Adelaide Bar Boys



Adelaide Laneways Credit: Danielle Elia



ALURE

Festival Centre Drive, Adelaide 5000



BREAD & BONE

15 Peel Street, Adelaide 5000



HOTEL RICHMOND

128 Rundle Mall, Adelaide 5000



MALT SHOVEL TAPHOUSE

Festival Centre Drive, Adelaide 5000



MELT PIZZARIA

38 Waymouth Street, Adelaide 5000



NOLA

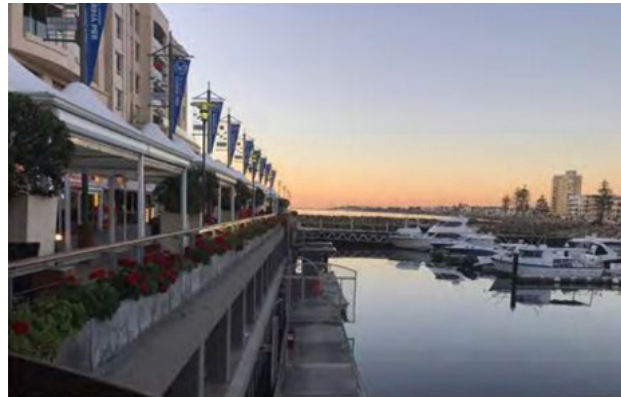
28 Vardon Avenue, Adelaide 5000





OSTERIA OGGI

76 Pirie Street, Adelaide 5000



OYSTER BAR

Marina Pier, 10 Chappell Drive,
Glenelg 5045



PLUS 82 MIMI

50 Sturt St, Adelaide, 5000



PRESS FOOD & WINE

40 Waymouth Street, Adelaide 5000



PUBLISHED ARTHOUSE

11 Cannon Street, Adelaide 5000



SAMMYS ON THE MARINA

1/12 Holdfast Promenade, Glenelg 5045





SHOBOSHO

17 Leigh Street, Adelaide 5000



STAG PUBLIC HOUSE

299 Rundle Street, Adelaide 5000



YIASOU GEORGE

26 East Terrace, Adelaide, SA 5000



2KW BAR & RESTAURANT

2 King William Street, Adelaide 5000



EVENT SERVICES & DELEGATE EXPERIENCES

The Adelaide Convention Bureau is the peak body for business events in South Australia. We can ensure your delegates have memorable experiences.



Right next door
to the heart of
the city.

Located less than
6km from the city,
with its world-class
convention centres,
hotels, shopping and
entertainment precincts,
Adelaide Airport is
the gateway to South
Australia that transports
you to a world of
business and leisure
within minutes.



Qantas Conference Travel

Experience the Spirit of Australia.



Thinking of Adelaide for your next conference?

As Australia's national carrier, Qantas Airways offers a network spanning 206 destinations across, Asia and the Pacific, the Americas, Europe, the Middle East and Africa, and Australia including those served by our codeshare partner airlines.

Airfares are available from

30+

countries including
our expansive
domestic network

Connected worldwide with

16+

partner airlines

We also like to pack more into each trip. Your delegates can enjoy:



Up to 10% off
published
airfares



Customised
online booking
tool



Conference
advertising in
Qantas inflight
magazine



Free Qantas
Frequent Flyer
membership
to all inbound
delegates

Tailored, personal and memorable – we'll help bring together a seamless conference experience.

 **QANTAS**
Spirit of Australia



EVENT SERVICES & DELEGATE EXPERIENCES

NAME	PAGE
Adelaide Expo Hire	64
Adelaide Sightseeing Tours & Charters	64
AVM Catering	65
Des's Minibus	65
Venture Corporate Recharge	65



ADELAIDE EXPO HIRE

Adelaide Expo Hire are the most highly awarded exhibition company in Australia having been inducted three times into the MEA Hall of Fame. Located within 20 minutes of metropolitan Adelaide venues, our strengths lie in our extensive product base, experience and contacts within the industry, and we are proud to be the preferred exhibition supplier to the Adelaide Convention Centre.

AEH Exhibitions welcome the opportunity to partner with you to maximise your exhibition or event. Our services include shell scheme booths, furniture, signage, carpet, display equipment, electrical and lighting installations, audio visual equipment and plants.

AEH Custom Displays has the expertise, creativity and manufacturing capabilities to create iconic solutions. We can build your stand in a variety of sizes, designed to meet your specifications to create a lasting visual impression at all trade shows and conferences.

AEH Signs provides a range of solutions including high quality large format display and sign printing. Our cutting edge print technology allows us to deliver outstanding production within budget and on time, every time.



31 Deeds Road,
North Plympton, SA 5037
P. +61 8 8350 2300
F. +61 8 8350 2301
E. adexpo@aeh.com.au



aeh.com.au



ADELAIDE SIGHTSEEING TOURS & CHARTERS

Adelaide Sightseeing is part of the award winning, South Australian operated, Sealink Travel Group; one of Australia's most respected tourism and transport providers.

We offer a comprehensive range of mainland tours and experiences through our Tours and Charters division, with both public tours, and the ability to create tailor made itineraries.

Our public tours highlight the diversity of South Australia and visit many popular regions such as the City of Adelaide, Barossa Valley, Victor Harbor, McLaren Vale, Murray River, Kangaroo Island and Adelaide Hills & Hahndorf.

With tailor made itineraries, you are only limited by your imagination. We work with many of our State's top experience providers and can create the ideal itinerary to suit both budget and group numbers.

Bring us your ideas, or let our experienced Groups Department suggest what would work for your event.

A 'one-stop-shop', Adelaide Sightseeing will work with organisers to arrange everything from airport transfers and off-site transportation, to team building experiences, partner programmes, pre & post touring options and unique experiences perfect for any business event. Even better; it's all in one booking!

Ask us about creating a dedicated online booking link to add to your registration page including special delegate discount codes for public tours, and easy online booking & payment options for tailor made touring.

Up to 10 pax	People Mover	Mercedes
Up to 20 pax	Mini-bus	Toyota
Up to 33 pax	Midi Coach	Higer
Up to 51 pax	Luxury Large Coach	Scania



440 King William Street,
Adelaide, SA 5000
P. +61 8 8202 8616
F. +61 8 8202 8666
E. BDToursandcharters@sealink.com.au



adelaidesightseeing.com.au



Adelaide Sightseeing
TOURS & CHARTERS

AVMCATERING

AVMCatering is proudly operated by Adelaide Venue Management, the team behind Adelaide's three premier event venues: Adelaide Convention Centre, Adelaide Entertainment Centre and Coopers Stadium.

With decades of experience delivering memorable and seamless events, our talented chefs and professional service staff are well versed in delivering creative, restaurant-quality catering solutions for everything from intimate gatherings through to large-scale events. Think business meetings, functions, networking events, cocktail receptions and more!

We offer end-to-end solutions for all catering styles, from hassle-free platters delivered direct to your boardroom to banquets with full bar and table service by our professional hospitality staff.* Select from our extensive range of handcrafted menus, or work with our team to create a bespoke menu to match the style of your event.

Contact us today to find out how AVMCatering can help make your event all the more memorable...and stress-free!

"In my experience, AVMCatering are the most professional catering team Adelaide has to offer. The food and service are second to none, and the team will bend over backwards to accommodate your every event need."

- Bianca Attard, The Science Exchange

"Our organisation trialled multiple catering companies before we started working with AVMCatering. They were the first caterers to comprehensively understand our needs, and consistently deliver great results."

- Rebekah Smith, SAHMRI

*Minimum numbers apply



GPO Box 2669 Adelaide SA 5001
P. (08) 8208 2204
E. AVMCatering@avmc.com.au

avmcatering.com.au

AVM
CATERING



Des's Minibus

10 Bacon Street,
Hindmarsh, SA 5007

P. 13 33 77
+61 8 8440 1600
E. minibus@des.com.au



dessminibus.com.au

Des's Minibus offers a range of tailored services to meet your needs – one way and return transfers, airport transfers, conference and function shuttles, wine & food tours, as well as sightseeing & cultural tours.

Our vehicles range from 7-37 seats and we provide iPod connectivity, microphone compatibility and DVD players. We also offer a range of plain white buses with the latest technology for a more discreet corporate transport.



Venture Corporate Recharge

36 Provident Avenue,
Glynde, SA 5070
P. +61 8 8165 2033
F. +61 8 8165 2011
E. info@venture.net.au



venture.net.au



Venture Corporate Recharge provides specialised programs using Adventure Based Learning methodologies for conference and incentive groups. We deliver nature based programs at our Adventure Hubs (in the Adelaide Hills and McLaren Vale wine regions), plus other venues across SA, as well as bespoke in-house problem-solving and adventure race activities.

STRATEGIC PARTNERS

The destination is committed to a 'Team Adelaide' approach to hosting business events.

Strategic Partners meet regularly to discuss opportunities for Adelaide, South Australia as a business events destination. Team Adelaide consistently demonstrates a complete and unified solution to event organisers and delegates. The Strategic Partners of the Adelaide Convention Bureau are listed opposite.



**THE
CONFERENCE
COMPANY**

MAKE AN ENQUIRY

Contact the Adelaide Convention Bureau for
FREE advice and support for your next event.



+61 8 8237 0100



adelaideconvention.com.au



enquiries@adelaideconvention.com.au