

# Adelaide Planners' Guide 2021

# Covid-19 update

Due to COVID-19, some information here might not be up-to-date. To find out the latest on business events in South Australia, please contact the Adelaide Convention Bureau directly.



1300 277 774



[adelaideconvention.com.au](https://adelaideconvention.com.au)



[enquiries@adelaideconvention.com.au](mailto:enquiries@adelaideconvention.com.au)



# City venues and accommodation

Nestled within a park, Adelaide's one-square-mile city ensures that hotels and venues are all closely located.



# City Map

## City venues, locations and accommodation

### City venues

1. Adelaide Convention Centre
2. Adelaide Entertainment Centre 4km from Adelaide City
3. Adelaide Festival Centre
4. Adelaide Oval Functions & Events
5. National Wine Centre of Australia
6. Sanctuary Adelaide Zoo Functions & Events Centre

### City accommodation

1. Eos by SkyCity Adelaide
2. Hilton Adelaide
3. Holiday Inn Express
4. Hotel Grand Chancellor
5. InterContinental Adelaide
6. Oaks Embassy
7. Oaks Horizons
8. Pullman Adelaide
9. Stamford Plaza
10. The Playford
11. Crowne Plaza
12. Hotel Indigo
13. Majestic Roof Garden & Hotel

### City locations

1. Adelaide Central Markets
2. Art Gallery of South Australia
3. Botanic Gardens
4. SAHMRI
5. Rundle Mall
6. South Australian Museum
7. State Library of South Australia





# City venues

NAME	PAGE	MAP #	SIZE M²*	NUMBER OF MEETING ROOMS	CLASSROOM STYLE*	THEATRE STYLE*	BANQUET*	COCKTAIL RECEPTION*
Adelaide Convention Centre	32	1	20,000	27	1860	3000	3060	6000
Adelaide Entertainment Centre	34	2	2730	8	-	8000	1000	2000
Adelaide Festival Centre	36	3	533	6	100	600	350	700
Adelaide Oval Functions & Events	33	4	800	25	680	1400	850	1500
National Wine Centre of Australia	35	6	480	7	100	400	350	500
Sanctuary Adelaide Zoo Function & Event Centre	34	7	550	3	200	280	300	510

\*Capacities for largest room at venue



# Adelaide Convention Centre

Set at the heart of Adelaide's medical, entertainment and cultural precincts in the CBD and easily accessible to the city's airport and hotels, the Adelaide Convention Centre (ACC) is one of the world's most modern, flexible and technologically advanced facilities.

Boasting three distinct yet seamlessly integrated buildings, the Centre spans 20,000sqm of multi-purpose event space with a highly flexible design that enables it to deliver an extensive range of events. The ACC's East Building is the pinnacle of innovation and flexibility, with tiered seating for 3,000+ or a banqueting space for 900 under a glittering aerial backdrop, designed to resemble South Australia's outback sky.

The ACC is known for its creative menus, innovative technologies and sustainability leadership, and is committed to COVID Safe Events, with a comprehensive Government-approved COVID Management Plan.

The Centre's positioning on Adelaide's Innovation Corridor places delegates on the doorstep of leading research, medical and educational institutions, with direct connectivity to Adelaide BioMed City and Lot Fourteen.

## Key features:

- 20,000sqm event space with multi-functional halls that can be subdivided into multiple configurations
- Three separate buildings, seamlessly integrated and each with its own dedicated entrance
- State-of-the-art Plenary Hall capable of being arranged into 15+ configurations
- 27 meeting rooms, easy to combine and group in clusters for smaller events
- Expansive foyer spaces providing natural light and outdoor views to the riverbank
- Three different types of seating (hinged, retractable and rotating) supporting swift turnarounds
- State-of-the-art Technology Studio enabling event pre-visualisation and virtual walk throughs
- Variety of inspirational areas overlooking the River Torrens

BUILDING	HALLS	AREA	HEIGHT	RECEPTION	THEATRE	CLASSROOM	BANQUET	WORKSHOP 8pax
East	Hall ABCD Plenary	2544m <sup>2</sup>	14.7m	-	3050	-	-	-
	Hall CDE	2040m <sup>2</sup>	14.7m	1835	2284	1086	900	1136
Central	Halls FGH	5628m <sup>2</sup>	10.4m	5065	5388	-	3060	2688
	Halls JK	1800m <sup>2</sup>	12.4m	1620	1444	765	780	672
West	Halls LMN	2655m <sup>2</sup>	9.5m	2480	2550	1320	1340	976
	Panorama Ballroom	1115m <sup>2</sup>	4.8m	1000	928	483	550	480

The Adelaide Convention Centre also has 27 meeting rooms available in various combinations of space with a theatre capacity of 50 to 400 people.

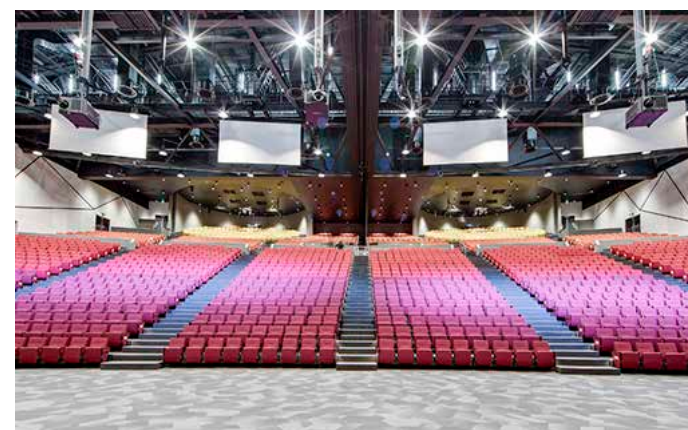
North Terrace,  
Adelaide, SA, 5000



P. +61 8 8210 6677  
E. sales@avmc.com.au

[adelaidecc.com.au](http://adelaidecc.com.au)

ADELAIDE CONVENTION CENTRE





## Adelaide Oval Functions & Events

Situated in the heart of the city Adelaide Oval is a world-class venue boasting the most up-to-date facilities in the market. Catering for two to 3000 people Adelaide Oval is a picturesque setting to entertain, celebrate and network with stunning panoramic views.

The venue offers 25 versatile event spaces with three of South Australia's largest function spaces: the William Magarey Room (616 pax\*), the Ian McLachlan Room (450 pax\*) along with Adelaide's largest private rooftop bar, the Lindsay Head Terrace (1000 pax\*) with spectacular views of the CBD.

As well as standardised options, Adelaide Oval thinks outside the box to deliver bespoke packages that heavily deliver on the wow factor with a range of options that can even expand far beyond the Oval's walls.

\*COVID Safe capacities

### Key Features:

- Five-star food and wine experience created by award-winning chefs, focused on South Australian producers
- Live sound, vision and lighting production technologies
- Unique and bespoke experiences for guests such as a thrilling RoofClimb adventure or behind the scenes stadium tour
- Options to add 'wow' factors to your event with the use of stadium lighting and LED ribbon boards



War Memorial Drive  
North Adelaide SA 5006  
P. (08) 8211 1100  
E. [functions@adelaideoval.com.au](mailto:functions@adelaideoval.com.au)



[adelaideoval.com.au](http://adelaideoval.com.au)

**Adelaide Oval**



### Oval Hotel

King William Road  
North Adelaide, SA 5006  
P. (08) 8368 9900  
E. [enquiries@ovalhotel.com.au](mailto:enquiries@ovalhotel.com.au)



[ovalhotel.com.au](http://ovalhotel.com.au)



Oval Hotel is a boutique hotel, with 138 rooms over five levels; boasting tranquil park-land surrounds, indulgent amenities, and the very best food and wine. Wrapping gently around the eastern façade, Oval Hotel is the first Stadium Hotel in Australia and one of only a handful in the world, truly making it a one-of-a-kind experience.



### Adelaide Oval Experiences

War Memorial Drive  
North Adelaide, SA 5006  
P. (08) 8211 1100  
E. [enquiries@adelaideoval.com.au](mailto:enquiries@adelaideoval.com.au)



[adelaideoval.com.au](http://adelaideoval.com.au)



**Koffee Ink Café** - serves casual breakfast, lunch, coffee and everything in between.

**Five Regions Restaurant** - exceptional dining experience overlooking the Oval's hallowed turf.

**Malt Shovel Tap House** - craft beer bar and restaurant located in the Riverbank Precinct.

**Bespoke Wine Bar & Kitchen** - local flavours and quality wines, all in a contemporary, stylish setting.

## Adelaide Entertainment Centre

Renowned as a concert stage to the world's stars, the Adelaide Entertainment Centre has also built an enviable reputation for hosting Adelaide's best functions.

Guests to the Centre are welcomed in breathtaking fashion, thanks to the venue's spectacular large dome entry. 'The Orb' comes alight in a kaleidoscope of colours at night and, together with a giant 67 metre outdoor LED screen, delivers fantastic impact on arrival.

The experienced, in-house chefs take great pride in creating unique, award-winning cuisine, prepared fresh on the premises.

The Centre offers more than 1,400 on-site car park spaces and is conveniently located in close proximity to the CBD. A tram station is located directly in front of the Centre on Port Road, providing free and frequent public transport to and from the City.

ROOM	BANQUET	COCKTAIL	CONFERENCE
Arena	1000	2000	8000
Theatre	700	1100	1900
Theatre A	360	550	600
Theatre B	250	450	550
Star Room	200	300	250
Suites	40	60	40
Lounges	50	60	50
Revelations Chapel	50	120	120



Port Road,  
Hindmarsh, SA 5007  
P. +61 8 8208 2222  
F. +61 8 8208 2233  
E. functions@theaec.net



theaec.net



## Sanctuary Adelaide Zoo Function & Events Centre

The Sanctuary is a beautiful Conference and Event Centre located on the first floor of the Adelaide Zoo entrance overlooking Botanic Park and adjacent River Torrens Precinct. This city fringe venue offers flexible meeting, exhibition or banquet space with stunning views and an abundance of natural light. Our catering options highlight sustainably farmed regional SA food and wine. In addition to the Sanctuary, our food & beverage services can be enjoyed as outside catering in all the

areas specified below in the Adelaide Zoo. Managed by Blanco Horner Hospitality Management, our depth of experience is reflected in our constant return clientele and multiple state and national awards. Blanco Horner's hospitality portfolio include, Botanic Gardens Restaurant Adelaide, Cafe Alere and Function Centre Flinders University and our most awarded catering business Blanco Catering. The Sanctuary Adelaide Zoo is your conference, events and catering solution all in one.

The capacity for the 2 square metres per person rule is as follows:

ROOM	AREA	DIMENSIONS	COCKTAIL	THEATRE	U-SHAPE	BOARDROOM	BANQUET
Durrell Gallery*	335m <sup>2</sup>	45 x 9/2m	166	-	-	-	80
Attenborough Room	286m <sup>2</sup>	27 x 9/11m	144	144	40	40	144
Sanctuary (Attenborough & Durell combined)	621m <sup>2</sup>	72 x 9/13m	310	300	-	-	250
Goodall Room	66m <sup>2</sup>	10 x 6.6m	32	32	27	30	32
Bamboo Forest	200m <sup>2</sup>	10 x 20m	179	-	-	-	80
Central Lawns	925m <sup>2</sup>	24 x 25m	784	-	-	-	750
Immersion Long House	80m <sup>2</sup>	5 x 14m	80	-	-	-	50
SANTOS Conservation Centre	100m <sup>2</sup>	10x10m	43	43	40	-	-



Main Entrance Adelaide Zoo  
Plane Tree Drive,  
Adelaide, SA 5000  
P. +61 8 8230 1313  
F. +61 8 8132 0813  
E. events@sanctuaryadelaidezoo.com.au



sanctuaryadelaidezoo.com.au





## The National Wine Centre

The National Wine Centre of Australia is one of the country's most awarded venues for conferences, meetings and events, most recently winning the 2019 Meetings and Events Australia, SA and National Awards for the Venue of the Year for under 500 guests.

Located conveniently on the edge of the CBD, adjacent to Adelaide's magnificent Botanic Gardens and just a short walk from the East End tram stop and nearby parking facilities, the venue affords visitors a stunning outlook and unique atmosphere. With eye-catching architecture and smooth functionality, an event at this beautifully situated venue offers you and your guests a sense of excellence in an iconic destination.

Officially opened in October 2001, the National Wine Centre of Australia's event spaces were designed with adaptability and accessibility in mind.

Each year, the Centre manages hundreds of meetings, functions and events for every occasion, consistently attracting high acclaim – and it is the respect between the National Wine Centre and its clients that has made the Centre one of the leading function and meeting venues in Australia.

Pillar-less event spaces, abundant natural light, easy access and flexible thinking complement the exceptional award-winning food and wine offering. The National Wine Centre's array of functional spaces, integrated with gracious outdoor terraces overlooking the vineyard and Botanic Gardens, are ideal for conferences, meetings, corporate and private functions, networking events, presentations and launches – or anything in between – for 10 to 1500 guests.

BUILDING	DIMENSIONS	AREA	ROUND TABLES	COCKTAIL	THEATRE	U-SHAPE	CABARET	BOARDROOM
Hickinbotham Hall	L32m x W15m x H3m - 12m	480m <sup>2</sup>	350	600	450	NA	250	NA
Exhibition Hall	L17.5m x W9.8m x H4.7m	335m <sup>2</sup>	160	200	220	NA	120	NA
The Gallery Room	L24m x W7.6m x H3m	160m <sup>2</sup>	100	100	150	30	80	50
The Vines Room	L21.6m x W7.5m x H2.5m	135m <sup>2</sup>	100	100	150	30	80	50
Broughton and Ferguson	L8.6m x W7.2m x H2.7m	63m <sup>2</sup> singular	50 singular	50 singular	60 singular	24 singular	40 singular	20 singular
		127m <sup>2</sup> combined	100 combined	100 combined	120 combined	NA combined	80 combined	40 combined

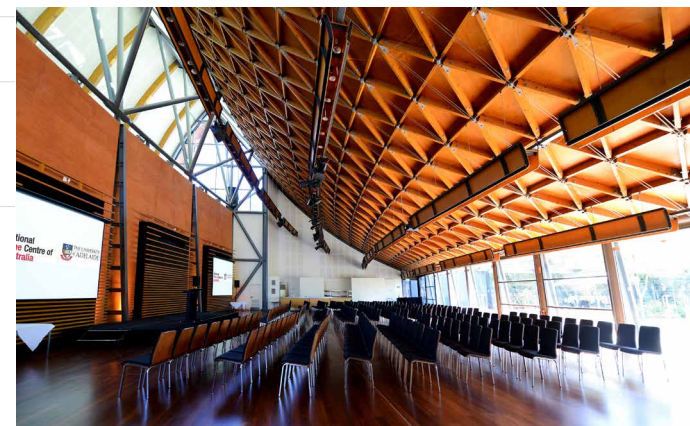
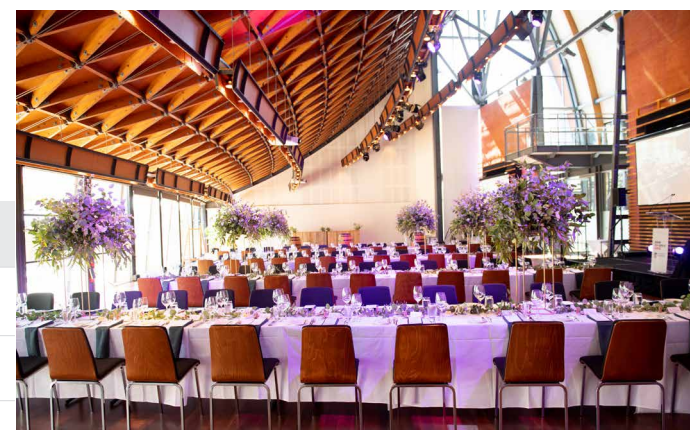
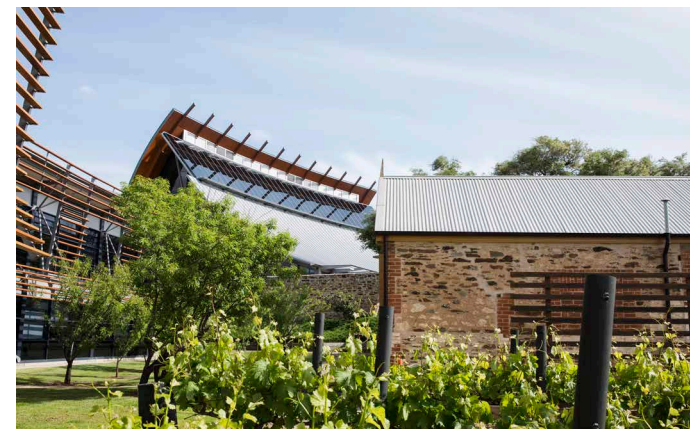
Cnr. Of Botanic  
and Hackney Roads  
Adelaide, South Australia 5000

P. 08 8313 3355  
E. nwc.info@adelaide.edu.au

[nationalwinecentre.com.au](http://nationalwinecentre.com.au)



**National  
Wine Centre of  
Australia**





**Adelaide Festival Centre**

King William Road,  
Adelaide, SA 5000

P. +61 8 8216 8633

E. [functions@adelaidefestivalcentre.com.au](mailto:functions@adelaidefestivalcentre.com.au)



[adelaidefestivalcentre.com.au](http://adelaidefestivalcentre.com.au)



Adelaide Festival Centre's function rooms can cater for 50-1000 guests. Whether it be an intimate cocktail party, elegant seated reception or corporate event, our rooms are unique with iconic views of South Australia.

The centre's location, combined with a focus on local produce and a selection of quality SA beverages, will ensure your guests' expectations are exceeded. Our in-house Events team have the expertise, resources and creative flair to bring your next event to life.



# City venues with accommodation

NAME	PAGE	ROOMS	SIZE m <sup>2</sup> *	NUMBER OF MEETING ROOMS	CLASSROOM STYLE*	THEATRE STYLE*	BANQUET*	COCKTAIL RECEPTION*
Hilton Adelaide	38	374	660	19	342	780	570	800
Hotel Grand Chancellor	41	220	408	8	210	420	350	420
Oaks Embassy	42	113	57	2	8	20	-	20
Oaks Horizons**	42	97	-	-	-	-	-	-
Pullman Adelaide	42	308	357	5	160	360	240	360
SkyCity Adelaide	42	123	628	6	-	650	450	650
Stamford Grand	40	220	683	13	250	650	520	750
Stamford Plaza	41	335	339	11	100	240	240	300
The Playford	43	182	400	7	150	500	330	600
Majestic Roof Garden & Hotel	43	120	75	2	39	80	72	130

\*Capacities for largest room at venue \*\*Accommodation Only



# Hilton Adelaide

## Hilton Introduces Hilton EventReady with CleanStay Setting Higher Standards for Meetings and Events

Hilton EventReady with CleanStay delivers event experiences that provide peace of mind from start to finish.

Designed to create event experiences that are clean, flexible, safe & socially responsible, Hilton EventReady with CleanStay provides curated solutions for every step of your event planning process, from redesigned event spaces and innovative technology resources to inspiring food & beverage with thoughtful presentations. To learn more about this global program visit [Hilton.com/CleanStay](https://hilton.com/CleanStay).

Hilton Adelaide is Adelaide's most centrally located five star hotel, at the heart of business, leisure and dining precincts. It is the only hotel in South Australia able to host 500 delegates to meet, eat and sleep, all under one roof.

Hilton Adelaide offers more than 2000 square metres of events space, comprising of 19 meeting rooms. This includes the spectacular pillar-free Grand Ballroom, the Balcony Rooms overlooking scenic Victoria Square, as well as multi-purpose meeting rooms, a sleek boardroom and an innovative business lounge. The spacious Level 1 Gallery comfortably accommodates up to 30 exhibition booths. Wireless high-speed internet coverage throughout the hotel, best-in-class technology and world-renowned hospitality combine to make Hilton Adelaide the outstanding choice for events in South Australia.

Hilton Adelaide is recognised as South Australia's leader in sustainable hospitality and the winner of prestigious environmental awards. As part of our commitment to sustainability, we offset all carbon emissions generated by the use of the meeting space and the food and beverage consumed at your event – at no cost to you.

ROOM	AREA	THEATRE	CLASSROOM	WORKSHOP	BOARDROOM	U-SHAPE	BANQUET	DINNER DANCE	COCKTAIL RECEPTION
Grand Ballroom	660m <sup>2</sup>	780	342	440	-	-	570	500	800
Ballroom A, B or C	220m <sup>2</sup>	260	108	136	50	60	170	120	250
Balcony Rooms	191m <sup>2</sup>	180	-	112	-	-	140	120	250
Balcony 1, 2, 3 or 4	45m <sup>2</sup>	40	21	24	18	18	30	-	40
Suite 1 or 2	35m <sup>2</sup>	25	18	-	12	12	20	-	25
Suite 3	1115m <sup>2</sup>	80	36	-	25	30	50	-	80
Suite 4	56m <sup>2</sup>	40	21	32	18	18	40	-	40
Meeting Room A	85m <sup>2</sup>	40	24	32	16	18	40	-	60
Meeting Room B	130m <sup>2</sup>	100	60	48	30	30	60	-	120
Victoria Room	252m <sup>2</sup>	200	120	120	-	-	200	150	250
Grill 2 & 3	118m <sup>2</sup>	60	-	-	34	-	-	34	100

233 Victoria Square,  
Adelaide, SA 5000

P. +61 8 8237 2060

F. +61 8 8231 3539

E. [cateringsales.adelaide@hilton.com](mailto:cateringsales.adelaide@hilton.com)



[adelaide.hilton.com](https://adelaide.hilton.com)





## Stamford Grand Adelaide

With panoramic views of the ocean, city and Adelaide Hills, Stamford Grand Adelaide is one of Australia's leading resort-style hotels. Located on absolute beachfront at Glenelg, Adelaide's premium coastal and retail precinct, the hotel is only a 10 minute drive from Adelaide's International Airport and 20 minutes from Adelaide's CBD.

A purpose built Convention Hotel, Stamford Grand Adelaide, features an entire floor that is dedicated to meetings and events. The hotel offers 683 square metres of conference, meeting and exhibition facilities. The elegant Grand Ballroom features floor to ceiling French windows and balcony access with uninterrupted ocean views. This versatile space can accommodate up to 750 for a cocktail event or 500 for a banquet dinner.

The hotel also features an additional 7 meeting rooms that are ideal for concurrent sessions or smaller meetings. Other features include access to the outdoor balcony and vehicle access to the conference floor. The hotel offers an extensive menu selection, on-site event coordinators and an on-site audio visual company. For an event with a difference, a luxury marquee can be set up on the Glenelg foreshore.

The hotel's 220 spacious guest rooms and suites offer spectacular views of the ocean or Adelaide Hills and are appointed to ensure you experience the ultimate in luxury and comfort when staying at Stamford Grand Adelaide. The hotel also features two restaurants and two bars, all with stunning beachfront views plus a fully equipped gymnasium, outdoor heated pool, spa and sauna.

ROOMS	AREA	CABERET	BANQUET	COCKTAIL (NO STAGE)	THEATRE	CLASSROOM
Grand Ballroom	683m <sup>2</sup>	380	500	750	650	250
Ballroom 1	165m <sup>2</sup>	80	100	190	170	56
Ballroom 2	150m <sup>2</sup>	80	100	190	170	56
Ballroom 3	134m <sup>2</sup>	56	80	170	150	48
Ballroom 4	124m <sup>2</sup>	48	60	140	130	40
Ballroom 5	110m <sup>2</sup>	40	60	110	100	40
Moseley Room	120m <sup>2</sup>	48	60	80	80	24
Hindmarsh Room	70m <sup>2</sup>	32	30	50	48	24
Colley Room	130m <sup>2</sup>	56	70	100	100	40
Boardroom	29m <sup>2</sup>	-	-	-	-	-

Please note that staging is not available in the Moseley, Hindmarsh and Colley Rooms.

Moseley Square,  
Glenelg, SA, 5045

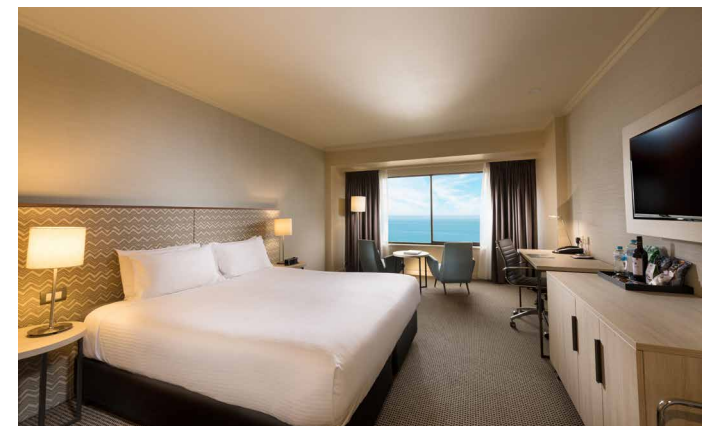
P. +61 8 8376 1222

F. +61 8 8376 1111

E. sales@sga.stamford.com.au



stamford.com.au



## Stamford Plaza Adelaide

Stamford Plaza Adelaide is conveniently located in the heart of the city on Adelaide's cultural boulevard, North Terrace. Only 15 minutes from Adelaide's International Airport, the hotel is ideally located opposite Parliament House, the Adelaide Convention Centre and within walking distance to the Festival Centre, River Torrens and Adelaide's lush parklands.

Stamford Plaza Adelaide offers 11 specially designed meeting and function rooms, two of which offer natural light, catering for any occasion up to 300 people. The magnificent Crystal Room, with its own private lift access, has been adorned with ornate ceilings and Waterford crystal chandeliers, offering a spectacular space to meet or dine in.

The elegant Boulevard Room has balcony access and views of leafy North Terrace and Parliament House, whilst the spacious

Terrace Ballroom can be divided into three separate rooms. There are also dedicated cabinet boardrooms, which feature in-built AV equipment and are ideal for small group meetings. With an on-site audio visual company and in-house professional event coordinators, Stamford Plaza Adelaide will ensure that every facet of your event runs smoothly.

The hotel features 335 contemporary and spacious guestrooms, including 22 suites, with panoramic views of the city and parklands. In addition, Stamford Plaza Adelaide features four diverse food and beverage outlets including Stamford's signature Argentinean restaurant, La Boca Bar and Grill. The hotel also features a fully equipped gymnasium, rooftop swimming pool and spa facilities. Stamford Plaza Adelaide's professional and experienced team are able to assist with all conference and event accommodation requirements.

VENUE	AREA	CABERET	BANQUET (NO DANCEFLOOR/STAGE)	COCKTAIL	THEATRE (WITHOUT STAGE)	CLASSROOM	BOARDROOM
Terrace 1	116m <sup>2</sup>	50	80	100	100	36	30
Terrace 2	115m <sup>2</sup>	50	80	100	100	36	30
Terrace 3	108m <sup>2</sup>	40	80	100	80	30	30
Terrace 1 & 2	231m <sup>2</sup>	112	180	200	180	72	50
Terrace 1, 2 & 3	339m <sup>2</sup>	160	240	300	240	100	-
Boulevard Room	206m <sup>2</sup>	100	150	150	160	60	50
Crystal Room	189m <sup>2</sup>	80	110	120	130	55	40
Clare Room	89m <sup>2</sup>	30	40	50	40	30	20
Club Room	89m <sup>2</sup>	25	40	30	40	25	15
Executive Lounge	160m <sup>2</sup>	40	60	100	60	30	20
Barossa Room	89m <sup>2</sup>	30	40	50	40	30	20
Boardroom	89m <sup>2</sup>	-	-	-	-	-	20
Chairman's Lounge	40m <sup>2</sup>	-	-	-	-	-	8

150 North Terrace,  
Adelaide, SA, 5000

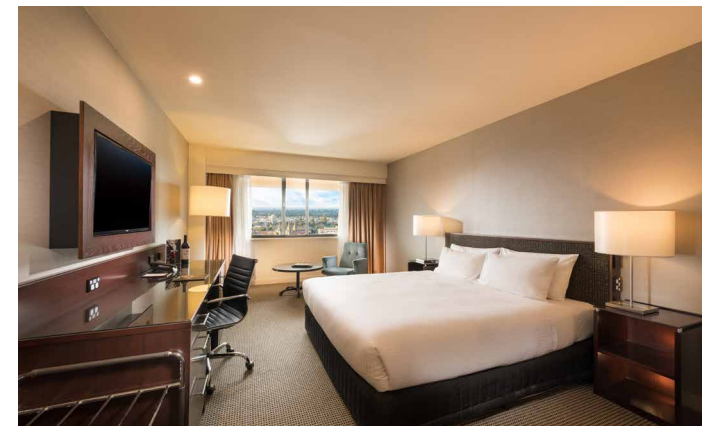
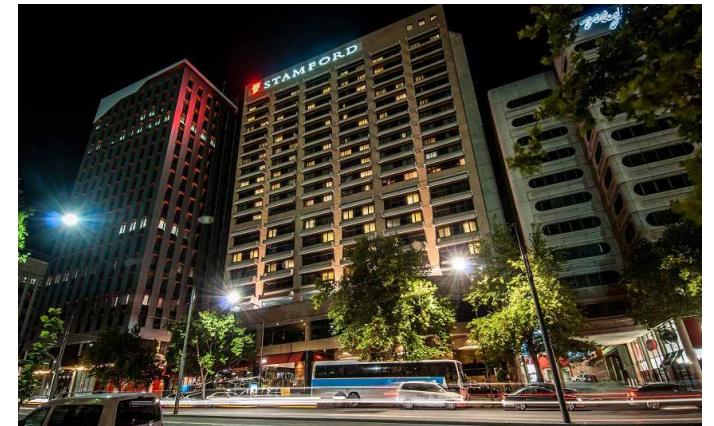
P. +61 8 8461 1111  
F. +61 8 8231 7572

E. sales@spa.stamford.com.au



stamford.com.au

  
**STAMFORD**  
*Plaza*  
Adelaide





## Skycity Adelaide

SkyCity Adelaide is South Australia's premiere entertainment destination. Our brand new \$330 million-dollar precinct expansion has transformed the property, now offering a world-class integrated entertainment experience with Adelaide's most luxurious hotel; Eos by SkyCity, new signature restaurants and bars including a destination rooftop bar, Eos Spa & Wellness, and an exclusive level dedicated to conferences and events. Level 2 of SkyCity Adelaide is our dedicated events floor, ideal for all occasions from

glamorous gala dinners, conferences, corporate meetings and social occasions. Expect the most beautiful and unique creations from our specialty chefs, jaw-dropping floor to ceiling windows and a seamless technological experience. Perfectly situated in the Riverbank Precinct, SkyCity Adelaide sits alongside the Adelaide Festival Centre, Adelaide Convention Centre and iconic Adelaide Oval. Walking distance from key landmarks, SkyCity Adelaide sits proudly in the vibrant heart of the CBD and is at the gateway to South Australia's world-famous regions.

ROOM	SIZE	HEIGHT	BANQUET	THEATRE	CABARET	COCKTAIL	CLASSROOM	EXPO BOOTH
SKYCITY Ballroom	628m <sup>2</sup>	6.0m	450	650	360	650	252	47
SKYCITY Ballroom West	193m <sup>2</sup>	6.0m	130	200	96	200	80	15
SKYCITY Ballroom East	435m <sup>2</sup>	6.0m	310	420	252	420	162	33
Southwest Suite	120m <sup>2</sup>	2.9m	70	114	56	114	45	9
Exclusive Boardroom A	52m <sup>2</sup>	3.2m	14	25	-	45	18	-
Exclusive Boardroom B	65m <sup>2</sup>	3.2m	30	32	24	50	18	-
Exclusive Boardroom C	46m <sup>2</sup>	3.2m	14	20	-	40	18	-
Pre-Function	186m <sup>2</sup>	3.4m	-	-	-	200	-	-



North Terrace,  
Adelaide, SA 5000  
P. (08) 8212 2811  
E. events@skycity.com.au



skycityadelaide.com.au

**sky**  
CITY  
ADELAIDE

## Hotel Grand Chancellor

Hotel Grand Chancellor Adelaide is located in the West End of Adelaide's CBD nestled amongst the laneways and new culture of bars, coffee shops and bistros.

Your Adelaide conference experience starts in one or more of our eight conference rooms. Small meeting or breakout spaces with flowing fresh air and natural light leading through to an elegant Ballroom featuring a 5.5 metre decorative ceiling.

Don't expect a standard coffee break and don't expect a standard bowl of mints, that's not our style. Boring conference food: not with us - timber boards laden with fresh South Australian produce welcome your guests for a seated lunch in Bistro Sixty5 or network with colleagues and exhibitors in our spacious pre-function area and outdoor balcony.

Why not include a visit to the Hotel Grand Chancellor Adelaide before signing any conference contract. We will ensure that your budget is met, without compromising on quality and service.

ROOM	AREA	THEATRE	CLASSROOM	COCKTAIL
Hindley 1	145m <sup>2</sup>	130	70	130
Hindley 2	118m <sup>2</sup>	110	60	120
Hindley 3	145m <sup>2</sup>	130	70	130
Hindley Ballroom	408m <sup>2</sup>	420	210	420
Torrens 1	48m <sup>2</sup>	30	-	25
Torrens 1, 2 & 3	118m <sup>2</sup>	70	-	80
Balcony	99m <sup>2</sup>	-	-	80
West End Room 1	99m <sup>2</sup>	60	35	50
West End Room 2	38m <sup>2</sup>	20	-	-
Poolside	-	-	-	100
Sebastian's Bar	-	-	-	100



65 Hindley Street,  
Adelaide, SA 5000  
P. +61 8 8237 3815  
F. +61 8 8237 3816  
E. csm@hgadelaide.com.au



grandchancellorhotels.com

**HOTEL GRAND  
CHANCELLOR**  
ADELAIDE

# MINOR HOTELS



## Oaks Adelaide Embassy Suites

96 North Terrace,  
Adelaide, SA 5000

P. +61 8 8124 9900

F. +61 8 8124 9901

E. salesadmin@theoaksgroup.com.au

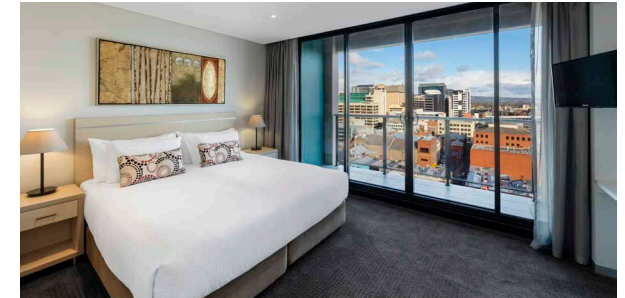


[oakshotels.com](http://oakshotels.com)

Located opposite the Adelaide Convention Centre in Adelaide's vibrant West End, Oaks Embassy is the perfect accommodation choice for your next conference offering One, Two and Three Bedroom Apartments. Our two meeting rooms are perfect for intimate gatherings or additional break-out space pre- or post-conference.

ROOM	CLASSROOM	THEATRE	BOARDROOM
Conference Room 1	8	20	12
Conference Room 2	-	-	10

# MINOR HOTELS



## Oaks Adelaide Horizons Suites

104 North Terrace,  
Adelaide, SA 5000

P. +61 8 8210 8000

F. +61 8 8210 8001

E. salesadmin@theoaksgroup.com.au



[oakshotels.com](http://oakshotels.com)

Oaks Horizons is a stylish apartment-style hotel conveniently located on North Terrace, opposite the Adelaide Convention Centre.

The perfect base for business travellers, Oaks Horizons offers a range of spacious one and two-bedroom self-contained apartments with full kitchens, laundry facilities and private balconies with city views.

Guest facilities include an indoor heated lap pool, sauna, spa, plunge pool and fully-equipped gymnasium.

## Pullman Adelaide

October 2020 unveiled a new era of meeting, conferencing and celebrating at Pullman Adelaide. The hotel's purpose built function centre undertook a full refurbishment, taking on a contemporary and innovative design that plays on the natural surrounds of the calm and leafy Hindmarsh Square and the hotel's unique 15th floor views of the Adelaide city skyline and hills.

Drawing in the natural light of these surrounds, Pullman Adelaide's already versatile function rooms with smart connectivity will provide a light-filled, fresh and modern setting, elevating your event to the next level. Our 308 rooms and suites offer a fresh, open layout and all-round connectivity; ready to welcome modern-day adventurers and nomads, travelling for business or pleasure.



ROOM	AREA (M²)	THEATRE	CABARET	BANQUET	CLASSROOM	COCKTAIL	U-SHAPE	BOARDROOM
Hindmarsh Ballroom	357	360	192	240	160	360	-	-
Hindmarsh 1, 2, 3 or 4	89	90	48	60	36	90	28	28
Hindmarsh 1 & 2 or 3 & 4	178	180	96	120	80	180	50	48
Executive Boardroom	46	40	24	30	24	40	15	16

16 Hindmarsh Square,  
Adelaide SA 5000

P. (08) 8206 8888

E. hb217@accor.com



[pullmanadelaide.com.au](http://pullmanadelaide.com.au)

**pullman**  
HOTELS AND RESORTS

ADELAIDE



# The Playford

The Playford Adelaide, MGallery by Sofitel is a boutique 5-star AAA accredited hotel located on the prestigious North Terrace. Offering an opulent blend of classic style and contemporary luxury, the Art Nouveau ambience flows throughout all 182 beautifully appointed guestrooms, studio spa suites and New York style loft suites. Guest facilities include a fully equipped Health Club with indoor heated

pool, spa and sauna, business centre and laundry, all of which are accessible 24 hours a day. Located 9 kilometers from Adelaide International Airport, The Playford is ideally situated with Adelaide Oval, Adelaide Convention Centre, SkyCity Adelaide Casino and the central business, shopping and restaurant districts all within walking distance.

VENUE	THEATRE	CLASSROOM	U-SHAPE	BOARDROOM	CABERET	COCKTAIL	AREA
Ballroom	500	150	-	-	200	400	400m <sup>2</sup>
Ballroom I	180	45	36	40	80	155	160m <sup>2</sup>
Ballroom II	70	24	20	30	40	90	80m <sup>2</sup>
Ballroom III	150	42	36	40	72	155	160m <sup>2</sup>
Adelaide	100	32	-	40	56	120	120m <sup>2</sup>
Boardroom	-	-	-	12	-	-	18m <sup>2</sup>

Meeting room ceiling height 3.6m (Boardroom 2.7m)



120 North Terrace,  
Adelaide, SA 5000  
P. +61 8 8213 8888  
F. +61 8 8213 8822  
E. sales@theplayford.net.au



theplayford.com.au



**Majestic Roof Garden Hotel**  
Frome Road  
Adelaide SA 5000  
P. +61 8 8100 4476  
E. groups@majestichotels.com.au

www.majestichotels.com.au

The Majestic Roof Garden Hotel is the award winning 4.5 star flagship property of Majestic Hotels. The hotel boasts free unlimited Wi-Fi for all guests, king-size beds throughout, mini-bar, marble bathrooms, restaurant, 24-hour room service, secure parking and a location that is hard to beat. Situated only 50 metres from the ever-vibrant Rundle Street in Adelaide's East End - with its huge variety of bars, restaurants and shopping, you can walk 5 minutes to Rundle Mall or 10 minutes to the Art Gallery, Adelaide University and Museum.

# Strategic Partners

The destination is committed to a 'Team Adelaide' approach to hosting business events.

Strategic partners meet regularly to discuss opportunities for Adelaide as a business events destination.

Team Adelaide consistently demonstrates a complete and unified solution to event organisers and delegates. The Strategic Partners of the Adelaide Convention Bureau are listed opposite.



**Government of South Australia**  
Department of the Premier  
and Cabinet



CITY OF  
ADELAIDE

**Adelaide.  
Designed for Life.**





# Make an enquiry

Contact the Adelaide Convention Bureau for  
FREE advice and support for your next event.



1300 277 774



[adelaideconvention.com.au](http://adelaideconvention.com.au)



[enquiries@adelaideconvention.com.au](mailto:enquiries@adelaideconvention.com.au)